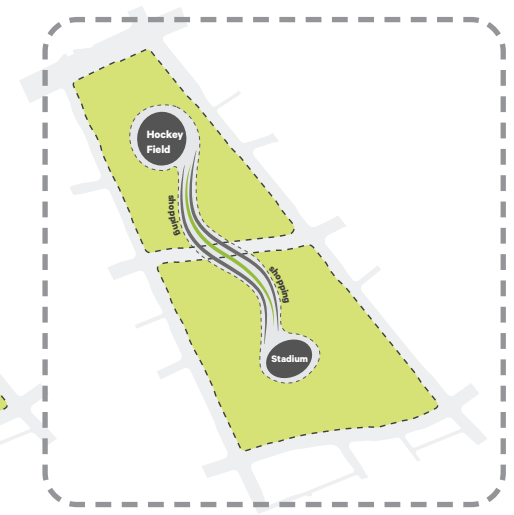
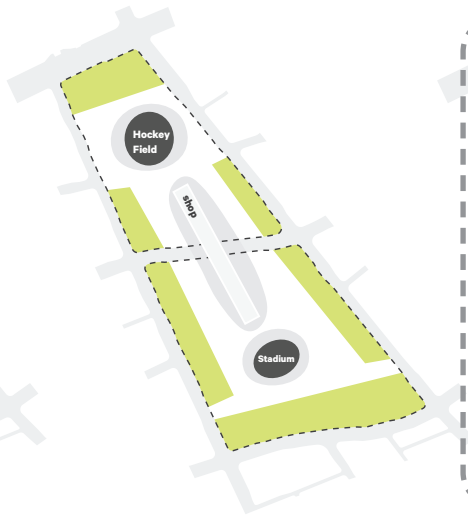
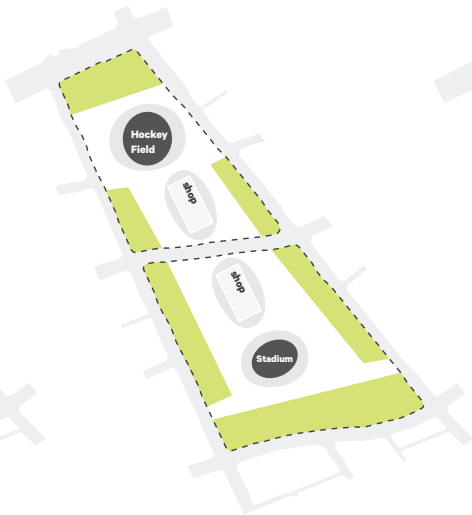
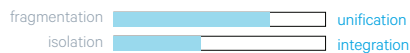
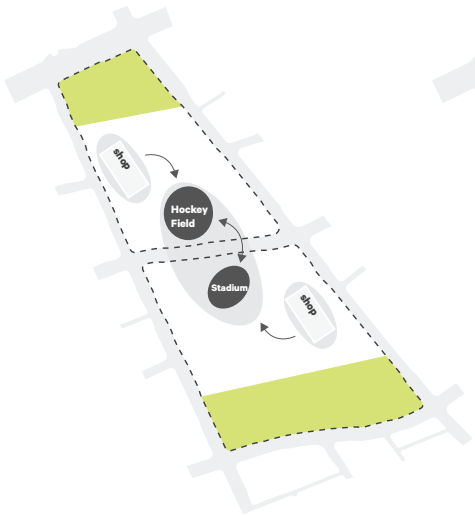
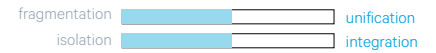
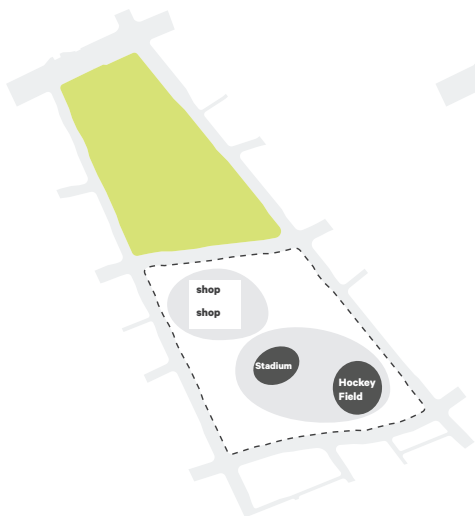


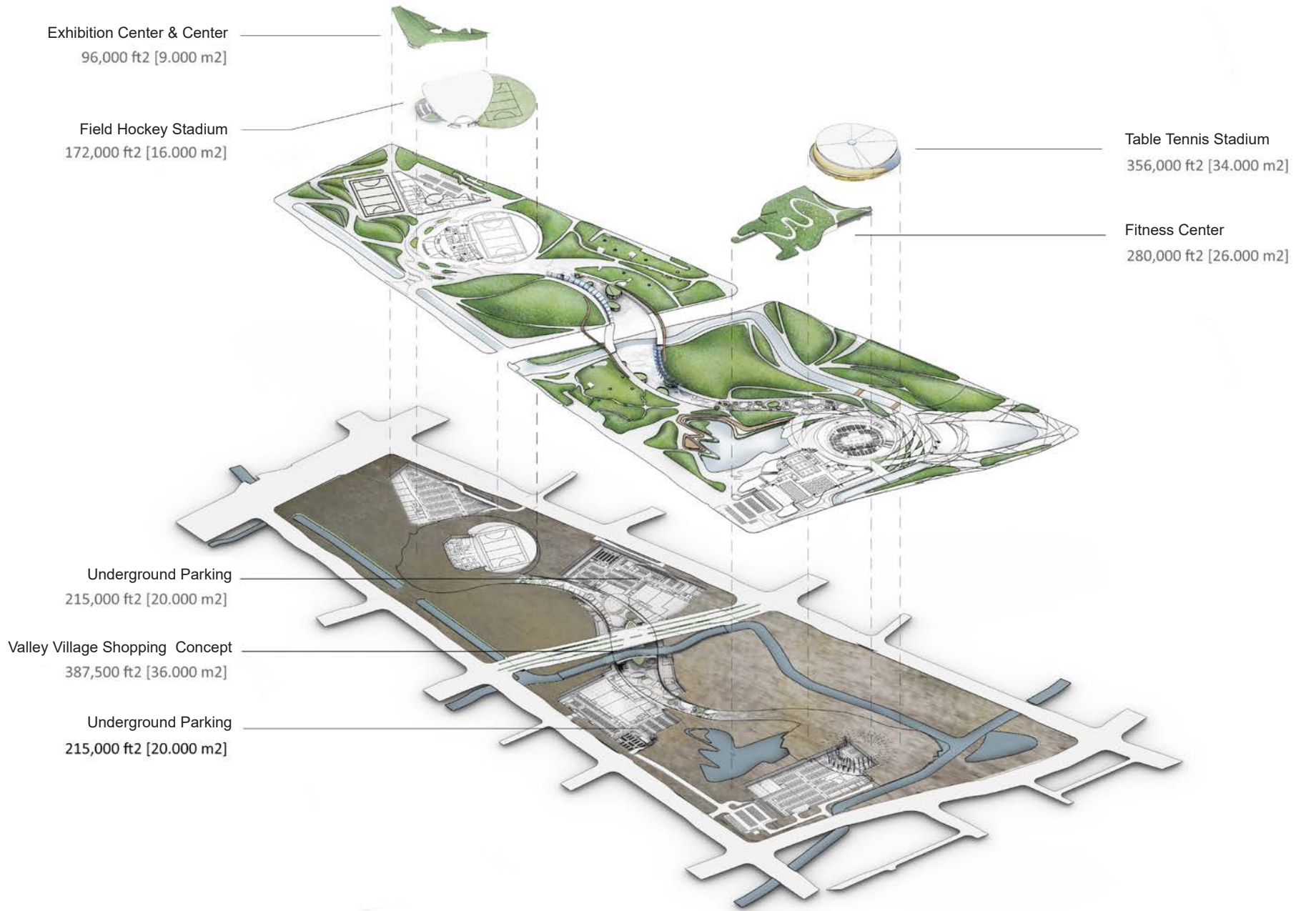
LEGACY PARK:

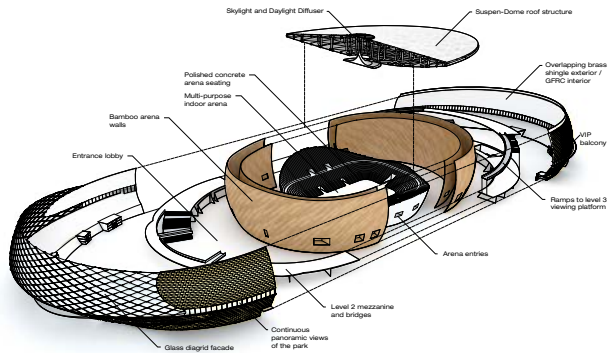
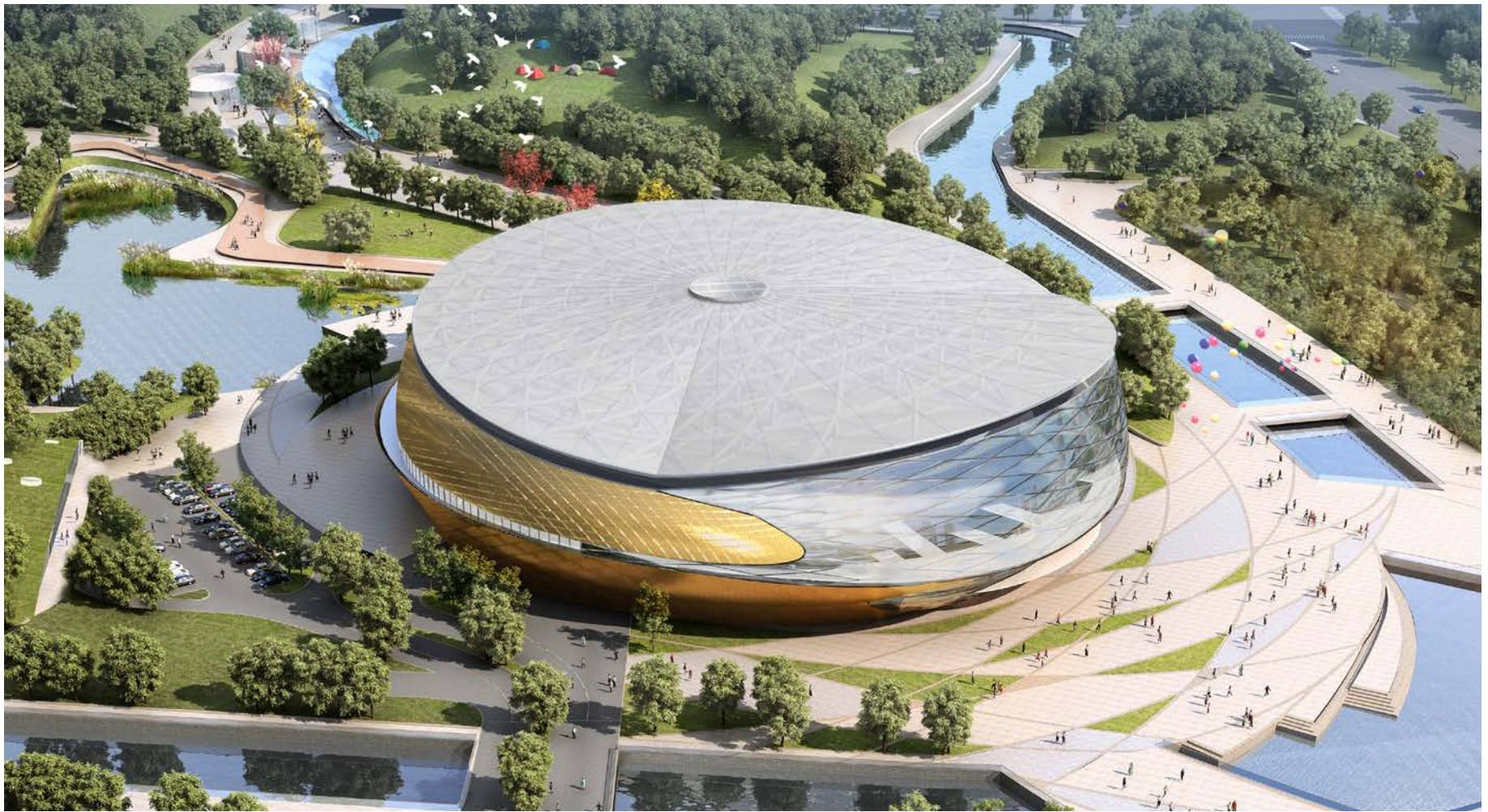
While the project is dedicated to the Asian games, it was critical that the park would also function as “green lung” for the growing district. The stadiums, as hybrids, can easily transform to concert halls and theater venues after the games.

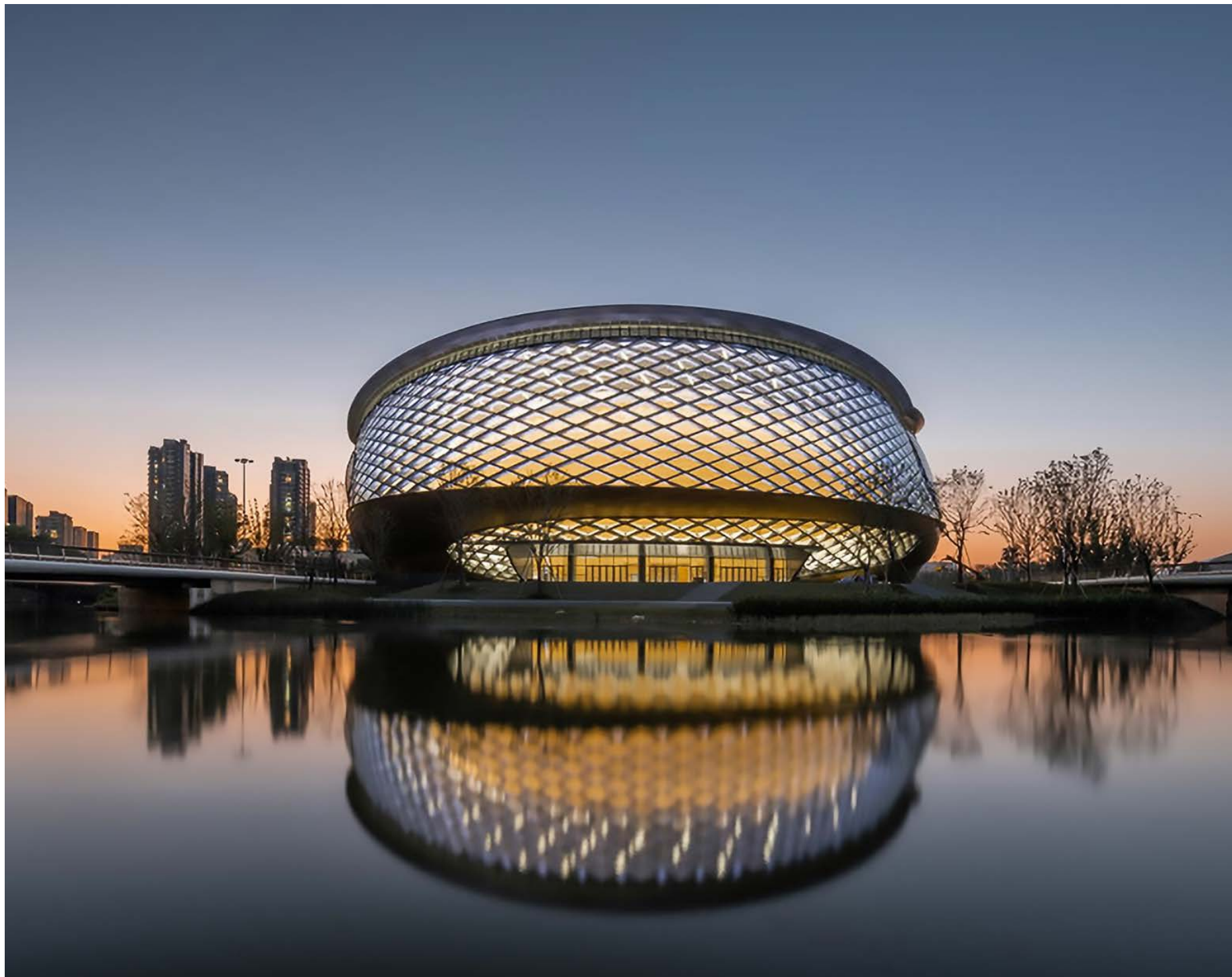


LEGACY PARK:

The 2 stadiums are placed in the center of the 2 park sections as attractors, connected by a Valley Village shopping mall, that passes under the road & river.









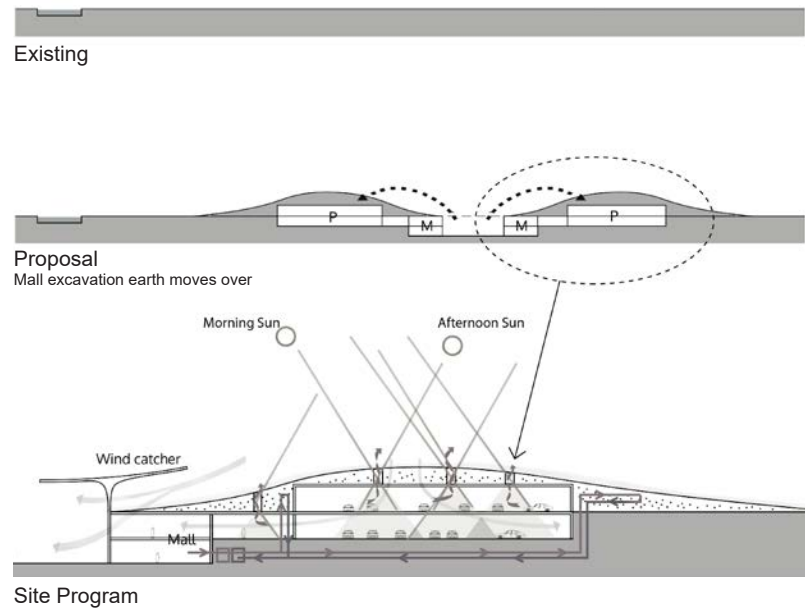
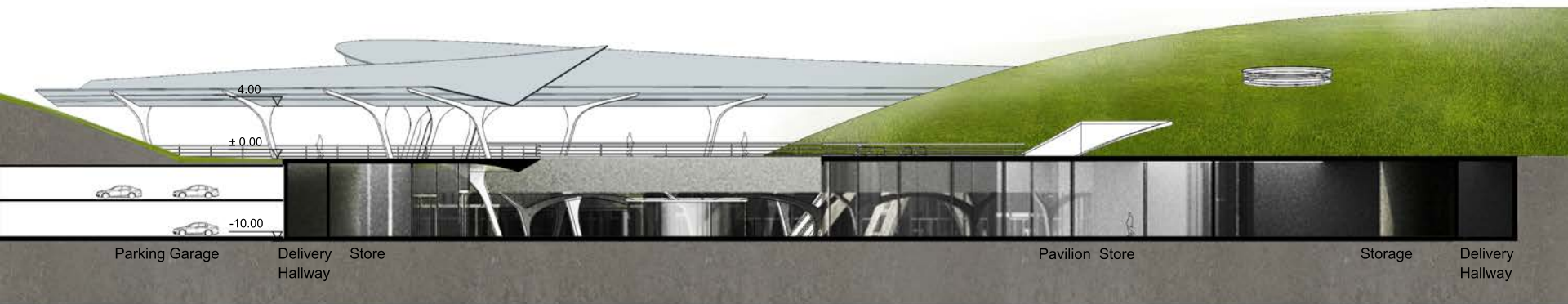
CONSTRUCTION IN PROGRESS



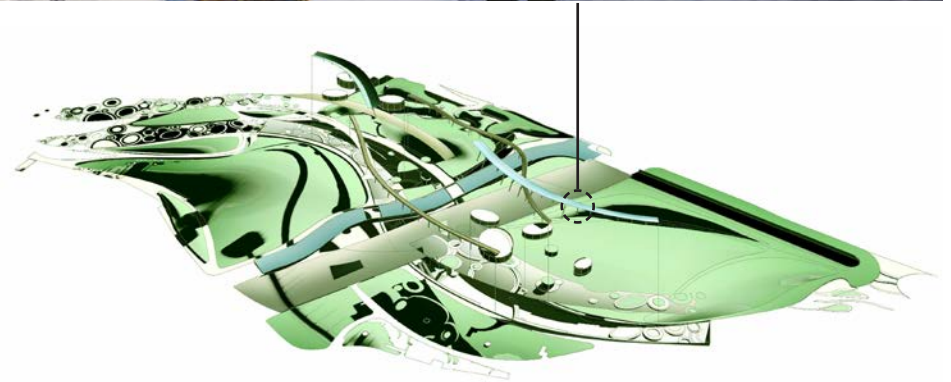
VALLEY VILLAGE SHOPPING MALL



VALLEY VILLAGE NIGHT VIEW



SHOPPING MALL: ZERO - EARTH STRATEGY
 Excavated earth created natural hills & green roofs on site

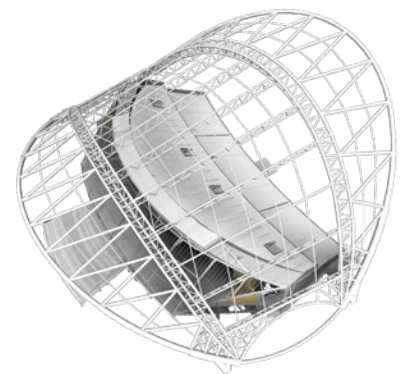


SOLAR WING SHADING

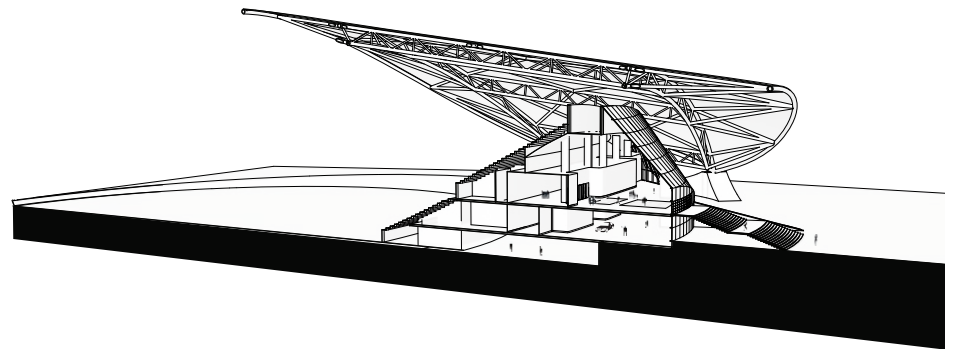
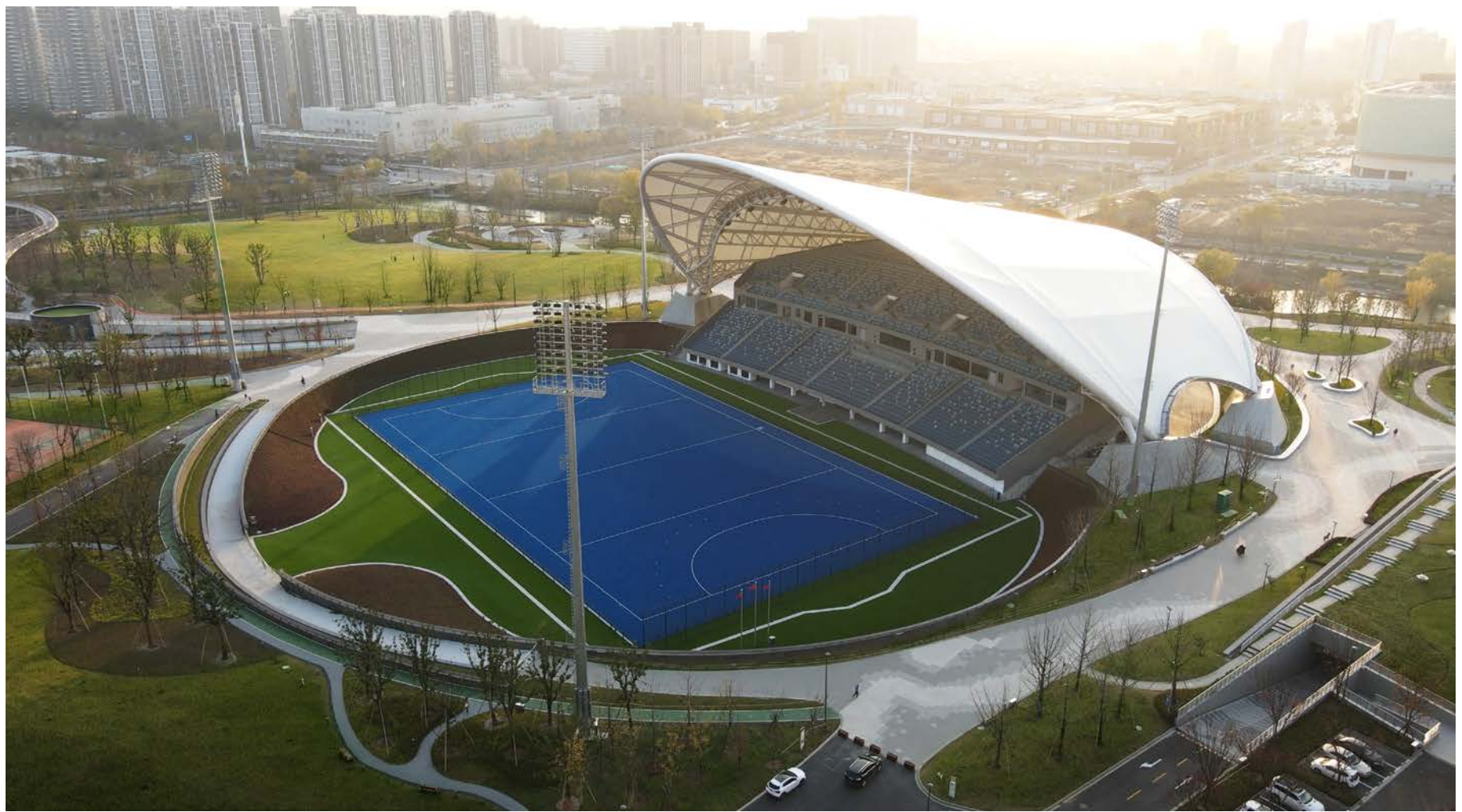


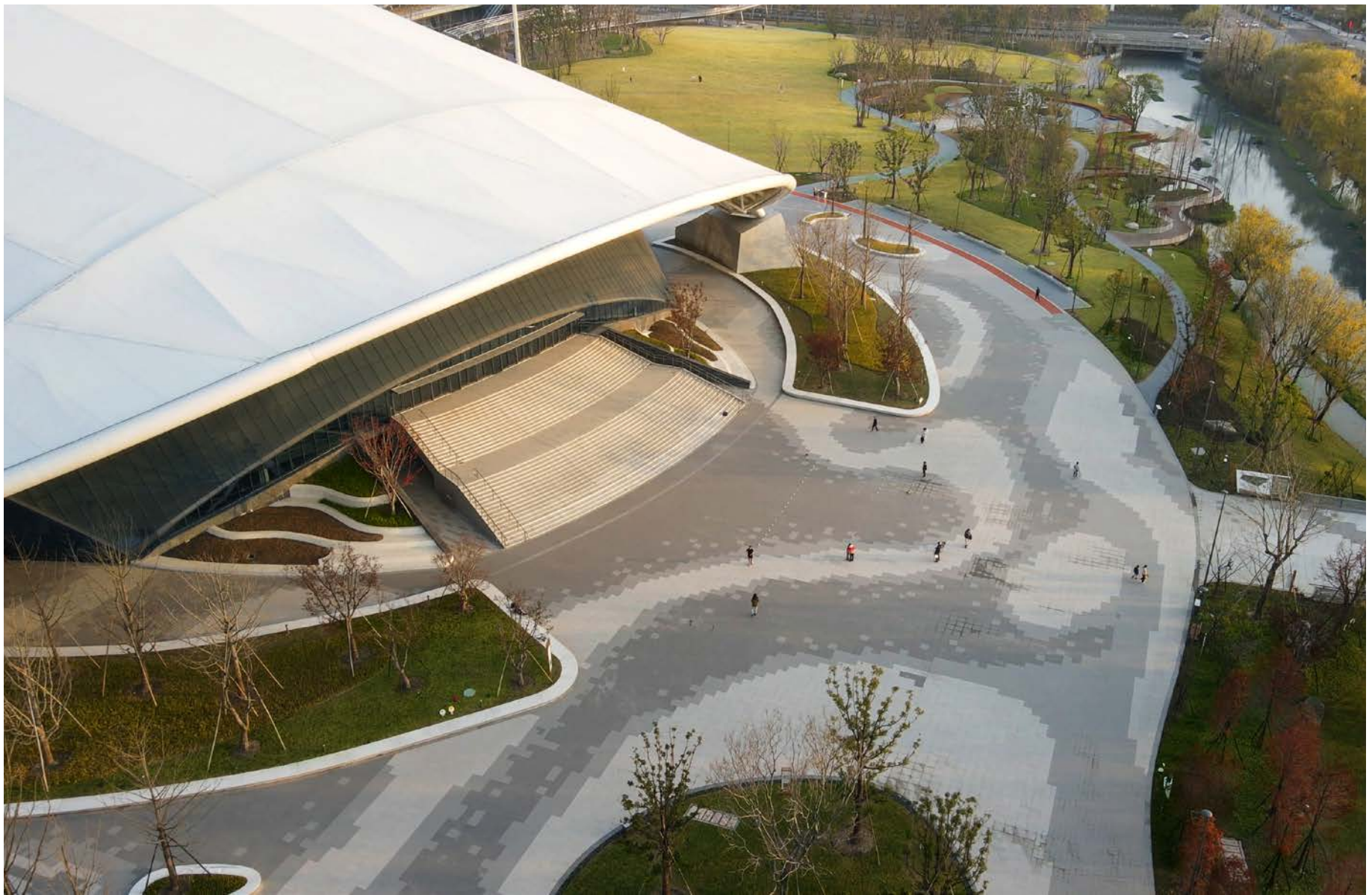


VALLEY VILLAGE AS CONNECTOR



FIELD HOCKEY STADIUM





PLAZA & MAIN ENTRANCE OF THE FIELD HOCKEY STADIUM

TREAT

DELAY

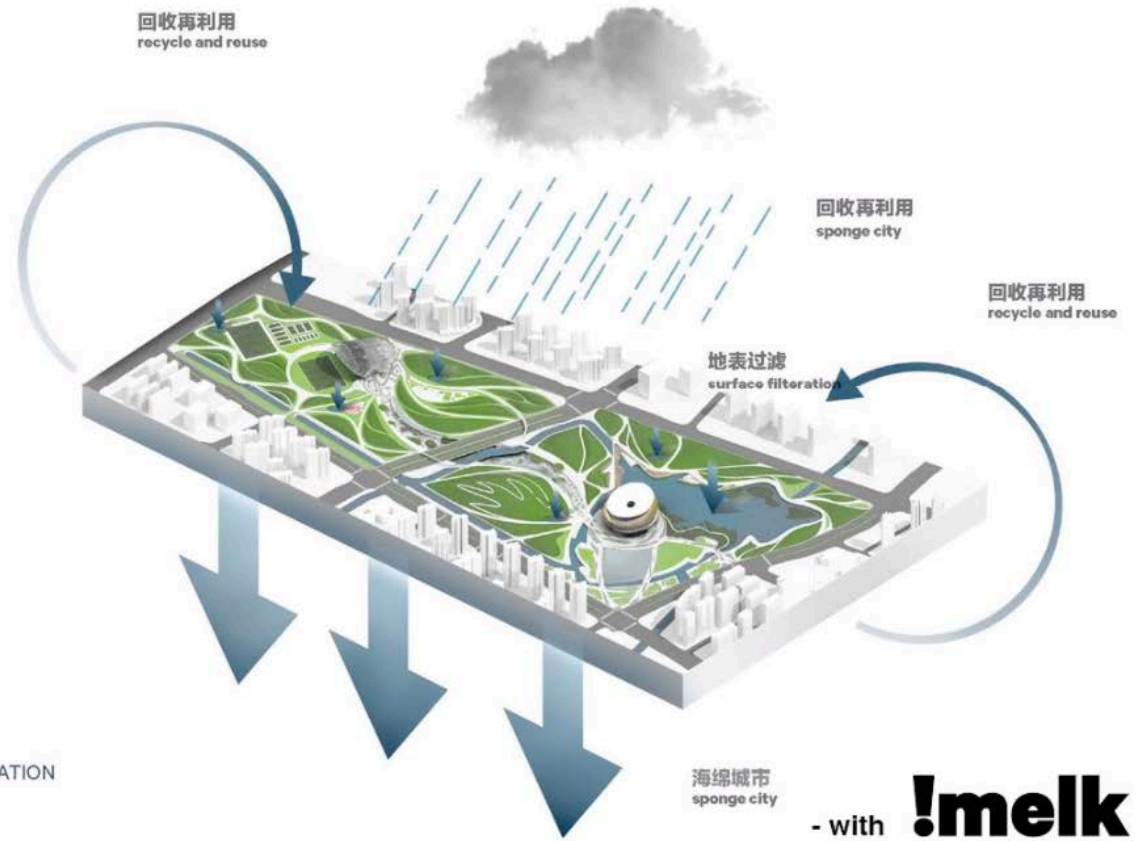
FILTRATION

STORE

USE

REUSE

-  BIOSWALE
-  GREEN ROOF
-  WETLAND
-  DETENTION POND
-  CISTERNS
-  RETENTION POND
-  IRRIGATION
-  PLUMBING
-  HEATING+COOLING
-  WATER FEATURE
-  OVERFLOW TO INFILTRATION



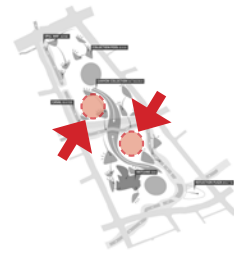
- with **!melk**



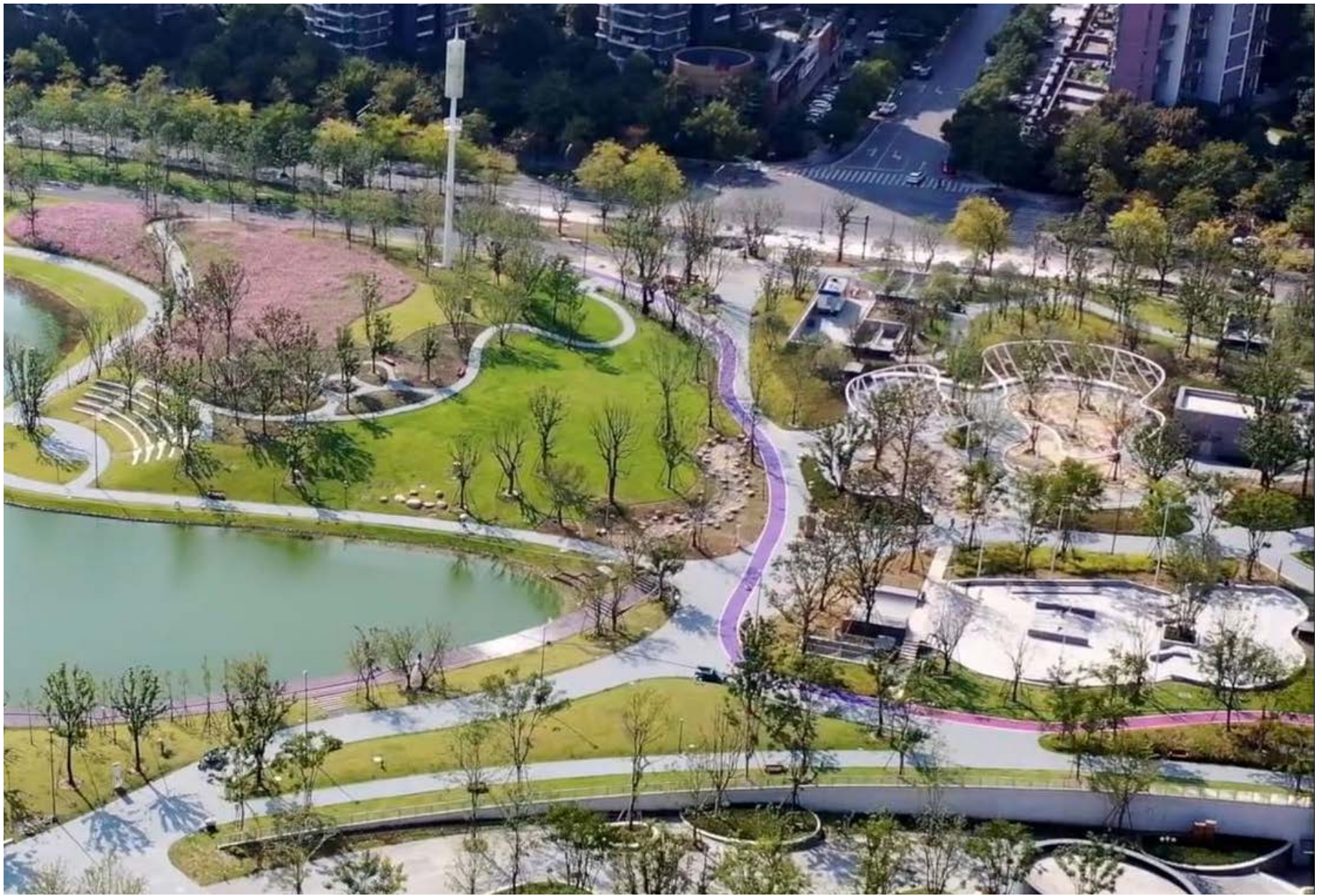




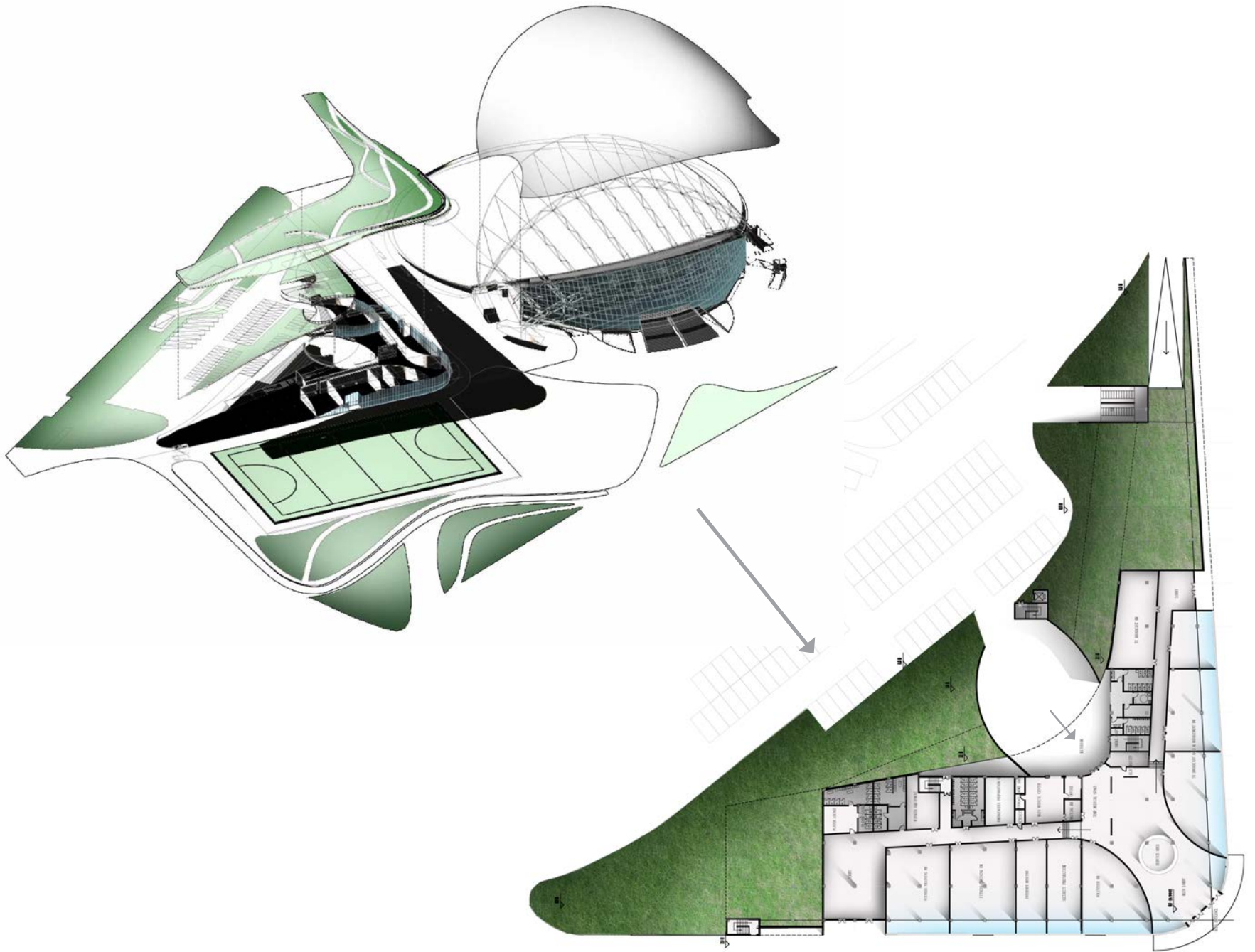
WETLAND PARK



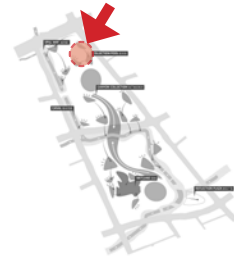
PLAYGROUND IN PARK



PLAYGROUND IN PARK



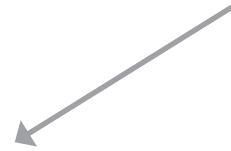
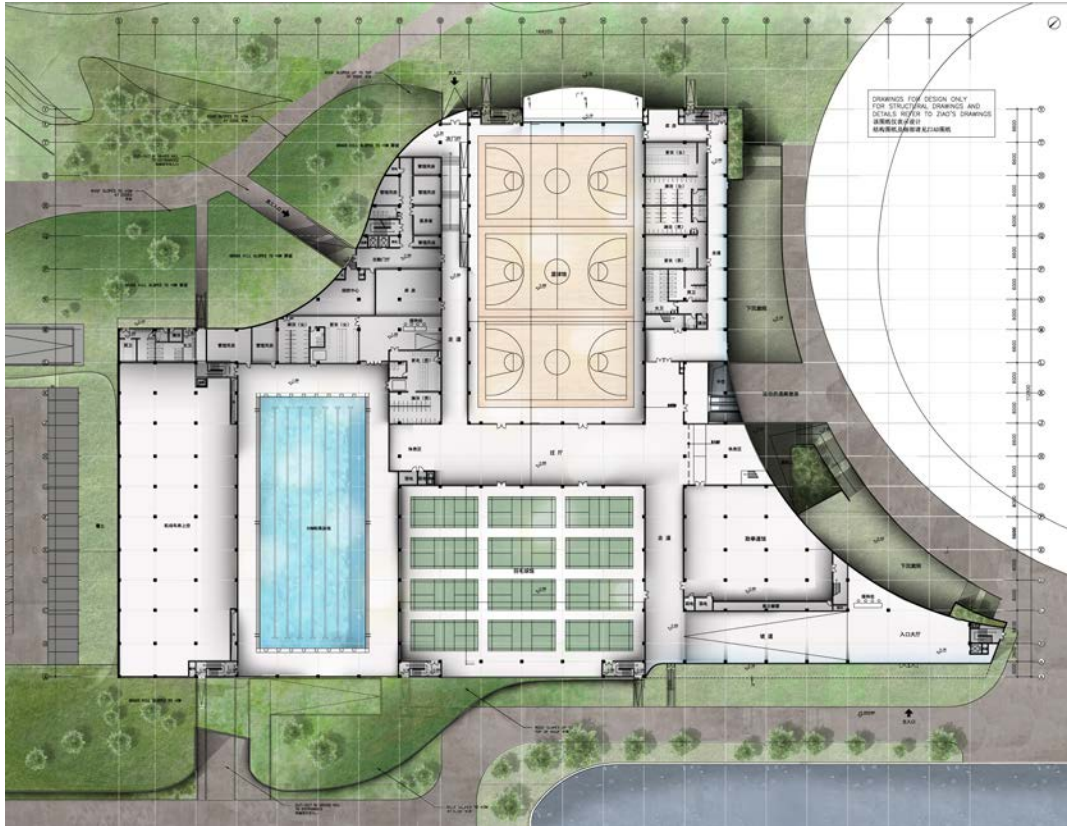
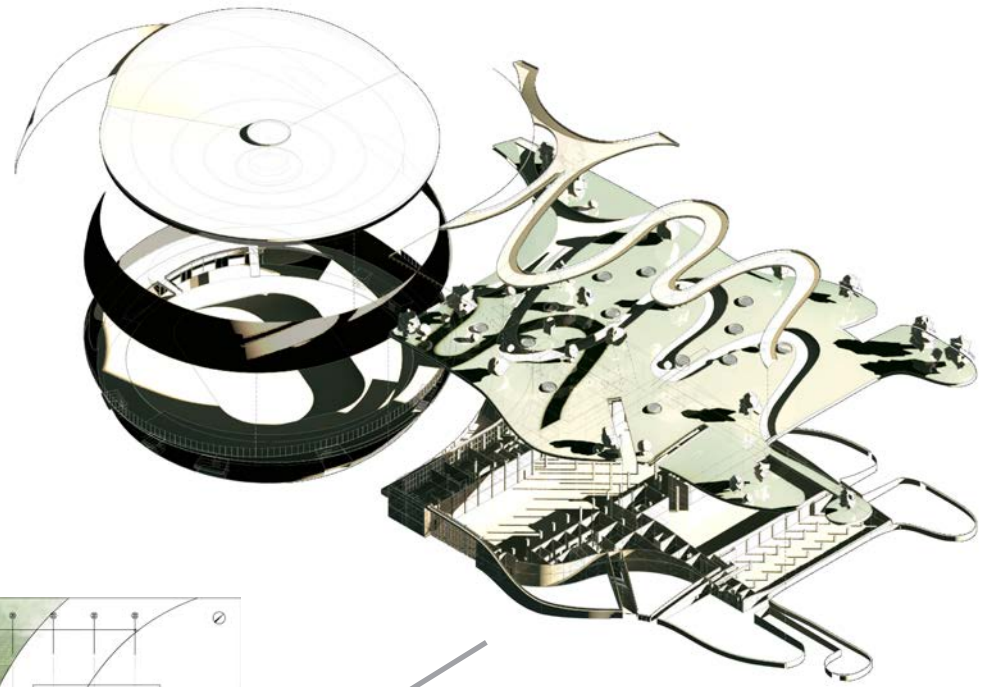
EXHIBITION CENTER & FIELD HOCKEY STADIUM



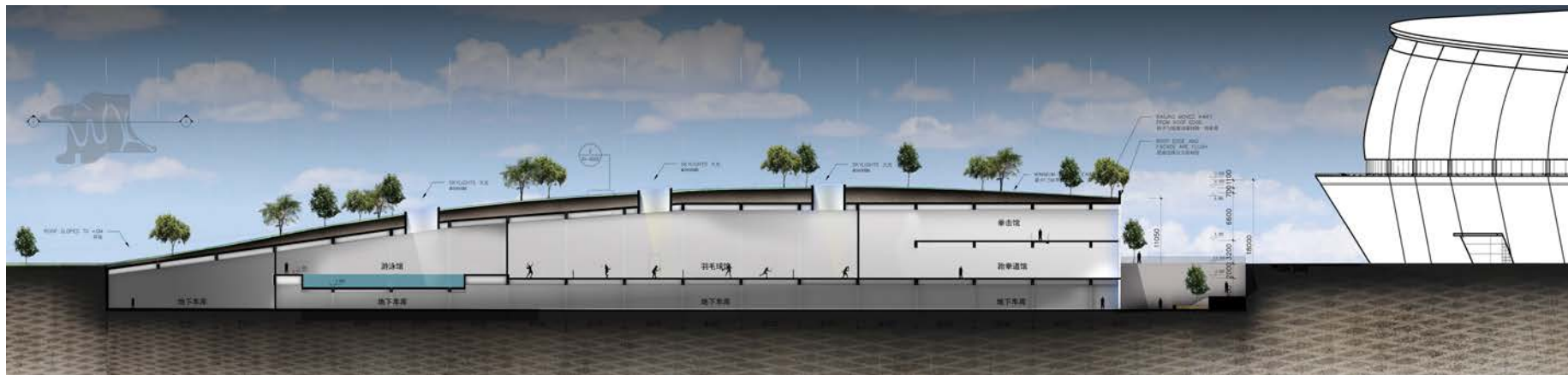
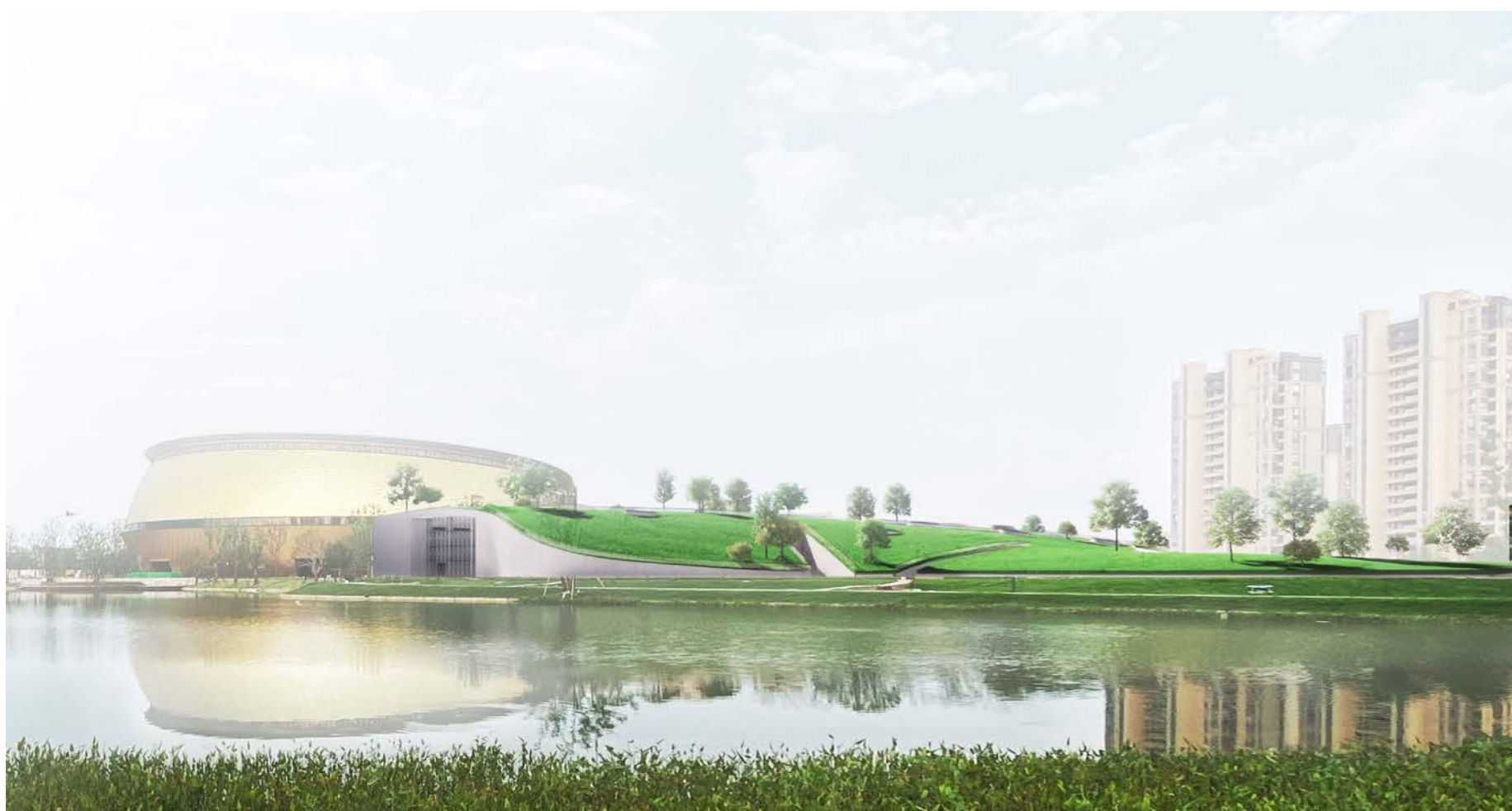
EXHIBITION CENTER



CONSTRUCTION IN PROGRESS



FITNESS CENTER & TABLE TENNIS STADIUM





FITNESS CENTER & TABLE TENNIS STADIUM



ASIAN GAMES, HANGZHOU CHINA TO OPEN IN 2022