

OBJEKT[©]

INTERNATIONAL

USA - CANADA

06 LIVING IN STYLE

**AXEL VERVOORDT
RETURNS TO
PALAZZO FORTUNY**

**MARCEL WANDERS
MONDRIAN DOHA**

**MILAN DESIGN
EXPLOSION**

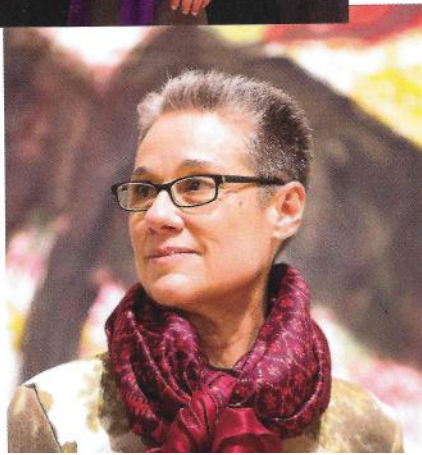
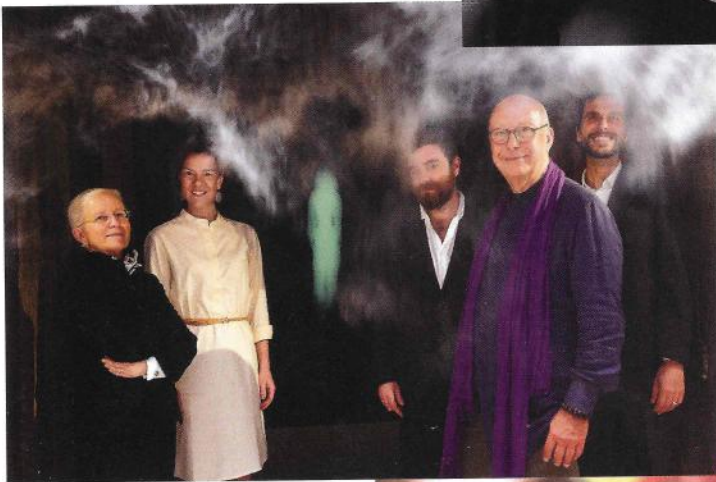
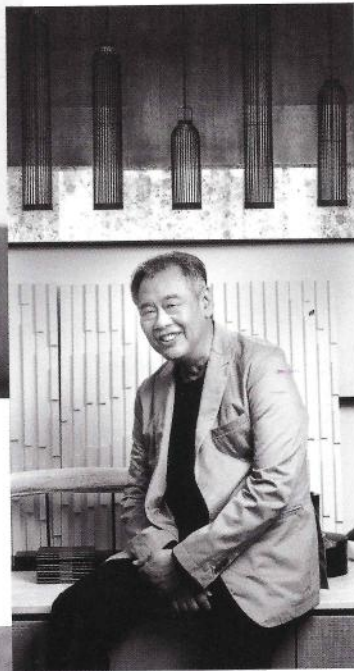
**ART
UNDER THE
FLORIDA SUN**

**YACHTING
IN THE
FAST LANE**

PRICE \$ 11.99



CONTENTS



MILAN DESIGN EXPLOSION 68

ZEN AND THE CITY 94
WINKA DUBBELDAM
IN NEW YORK CITY

PULLMAN KAIFENG JIANYE 100
ARCHITECT H.L.LIM

AXEL VERVOORDT RETURNS 110
TO PALAZZO FORTUNY

PAOLA LENTI'S 118
ARTISTIC ENERGY

SUZANNE LOGGERE 124
AT GOOILUST

CHATEAU BOLENSTEIN 132

AN ITALIAN 142
IN AMSTERDAM

ITALIAN TOP CHEFS 150
GO WILD ON SOCCER GRASS

CONTACT 152
SUBSCRIPTION
INFORMATION



WINKA DUBBELDAM DESIGNS INSCAPE
ZEN AND THE CITY

Inscape, in the heart of Manhattan is the brainchild of Khajak Keledjian. While honoring the traditions of meditation he wanted to infuse modern design with technology delivered through multi-sensory experiences using light, sound, scent and inner reflection.

He asked the renowned Dutch architect Winka Dubbeldam to give shape to his ideas.

text: Izabel Fonik
photos: Hans Fonik

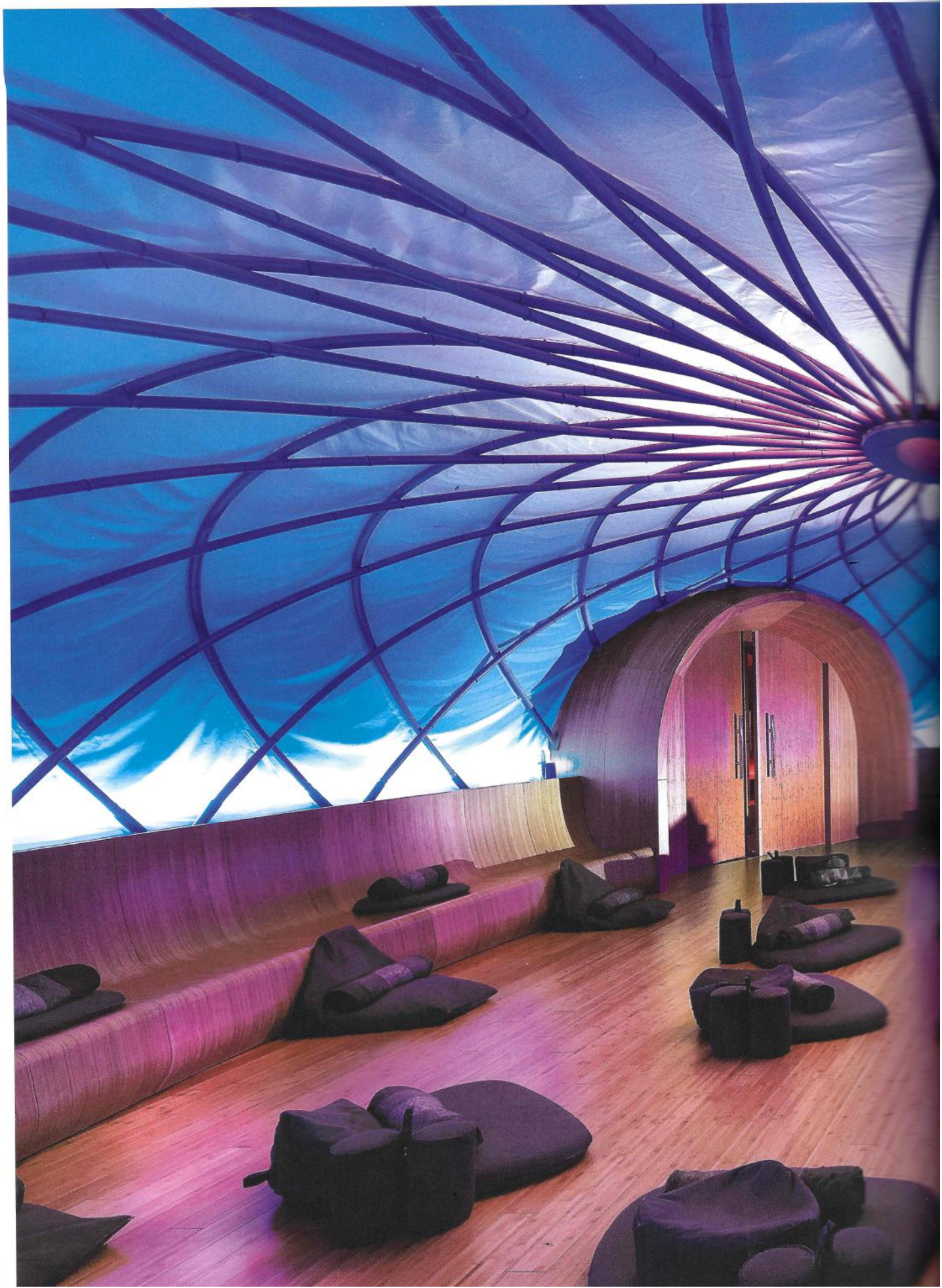
Left: architect Winka Dubbeldam.
Right: the entrance to Inscape at the 21st Street station in west New York City.

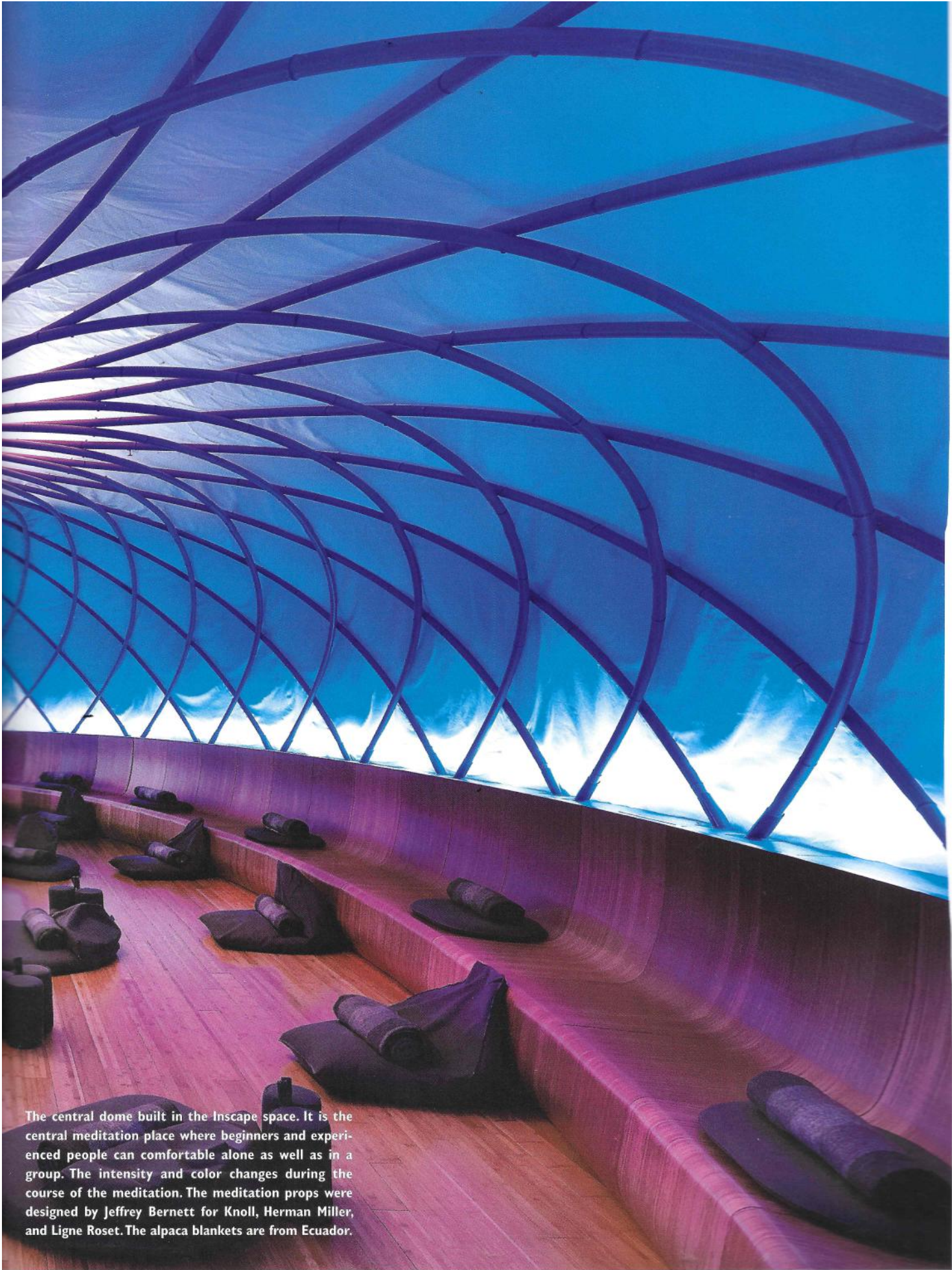
Meditation Reimagined

RELAXATION

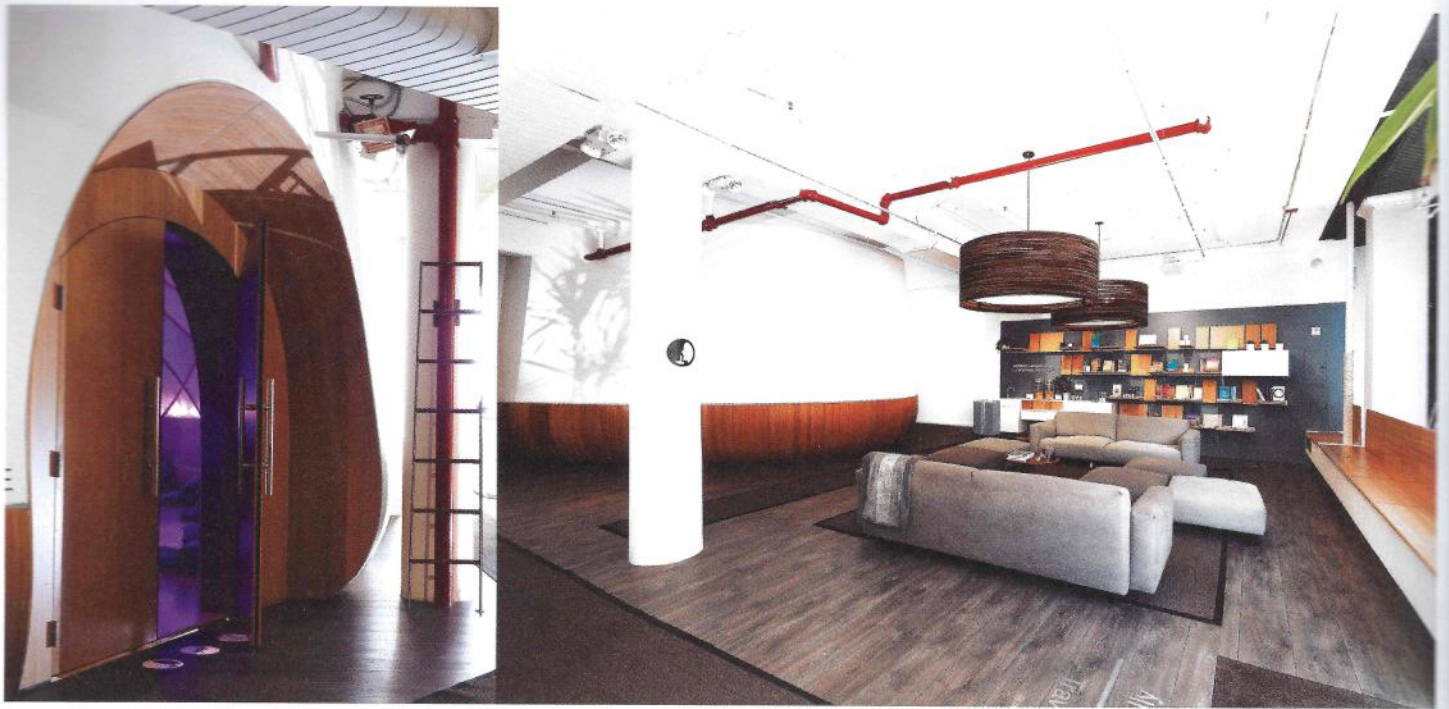
- Deep Sound
Use calm and repetition
to a guided sound therapy
experience
- Deep Rest
Bring your attention to
each part of your body,
killing go and recharging
- Deep Breath
Practicing to utilize deep
breath to calm or increase
up and energize

NO PIPE
PLEASE





The central dome built in the Inscape space. It is the central meditation place where beginners and experienced people can comfortably alone as well as in a group. The intensity and color changes during the course of the meditation. The meditation props were designed by Jeffrey Bennett for Knoll, Herman Miller, and Ligne Roset. The alpaca blankets are from Ecuador.



Above: the entrance of the dome and the central lounge shaped as a living room with large lamps that capture the space and the specially shelving that Winka custom-designed; it also acts as a sound buffer.

Right-hand page

The alcove room has been designed as a template for artist installations. As the room is furnished for lying-down meditation, the emphasis is on the ceiling. The knitted artwork in the photo is by Tini Courtney, whose 18,000-foot rope installation looks like a giant dream catcher.

Khajak Keledjian, founder and former CEO of the Intermix fashion stores launched Inscape in 2016 as a result of his serious approach to meditation. With this new place he wanted to focus on a balance of modern wellness and mindful luxury. A nondenominational approach, in combination with teacher-free classes, was his goal. Sessions in mantra, focus, and mindfulness styles are now led by audio guidance in the two surround-sound meditation spaces.

"Our studio is a quiet space away from the distractions of everyday life. The intentionally designed 5,000-square foot studio offers fully immersive audio-guided group experiences for meditation and relaxation" according to Khajak. He and his business partner Lew Frankfort asked the Dutch architect Winka Dubbeldam to realize their dream.

Winka: "We were friends already for more than 15 years and when Khajak asked me advise for his very specific concept for meditation, I said 'I can do that', as I had been meditating for many years and as designer have been thinking about the total lack of spatial concerns in those mediation spaces. It was really fun to work with him. He is very good at creating a new meditation concept. He wanted a living room where you can sit and be yourself. He also envisioned a special environment for meditation. We started with the idea of the encapsulated space where it is comfortable to meditate alone or with a group. It is designed to be comfortable both for beginners and advanced meditators." She created the dome with a woven bamboo ceiling where light/sound are integral and an important factor defining the atmosphere. No technology is visible, the space is pure and simple and allows the meditator to focus inside. The second space was designed for lying-down meditation and as a template for artists to create ceiling installations.

"The whole interior of Inscape deals with people's senses. That is something that you pick up the moment you enter the front

door. To enhance that, all materials are natural, such as bamboo and recycled cardboard, and the air is filtered with an aroma therapy" according to Winka.

She has made an impressive career in architecture and design. Born in the Netherlands, she studied architecture at the Academy voor Bouwkunst in the Dutch city of Rotterdam. Worked with BOA [Beware Of Architects], an architecture studio at Utopia Rotterdam, owned by Victor Mani & Chiel van der Stelt, and worked with Rem Koolhaas on regular basis. She wanted more and moved to New York in the nineties to study at Columbia University. From then on, it went quickly. Peter Eisenman offered her a job and soon after, in 1994, she started her own studio Archi-Tectonics in New York.

As a design leader, Winka Dubbeldam is the Chair and Professor of Architecture at PennDesign in Philadelphia, where she has gathered an international network of innovative research and design professionals. Previously, she taught advanced architectural design at Columbia and Harvard Universities, among other prestigious institutions.

The architect and founder/ principal of the New York firm Archi-tectonics is widely known for her award-winning work, recognized as much for its use of hybrid sustainable materials and smart building systems as for its elegance and innovative structures. Recent projects include the Greenwich Building and V33 building, both in NYC, the Ports1961 flagship retail store in Paris, London and Shanghai, the American Loft Building in Philadelphia, and a pro-bono design for an orphanage and school she is creating in Liberia, Africa. Winka also runs a design-research team to re-invigorate Downtown Bogota, and recently won the Yulin Design Competition in China. Archi-Tectonics' work ranges from residential to commercial, from real to virtual and is realized in urban designs, architectures, and installations.

