

Features

[cityrealty.com/nyc/market-insight/features/future-nyc/on-international-women039s-day-see-nyc-residential-buildings-designed-female-architects/16342](https://www.cityrealty.com/nyc/market-insight/features/future-nyc/on-international-women039s-day-see-nyc-residential-buildings-designed-female-architects/16342)



L to R: 42 Crosby Street/Annabelle Selldorf, 520 West 28th Street/Zaha Hadid, 15 Hudson Yards/Liz Diller

From [Future New York](#) [On International Women's Day](#), see [NYC residential buildings designed by female architects](#)

By [Michelle Mazzarella](#) Monday, March 8, 2021

It has been proclaimed that “the future is female,” but women have made a mark on New York City’s history as well. The new plaza taking shape to connect the DUMBO and Brooklyn Heights sections of Brooklyn Bridge Park will be named [Emily Roebling Plaza](#) in honor of **Emily Warren Roebling**, the engineer who oversaw the completion of the Brooklyn Bridge in the wake of her husband’s illness. The writings of [Ada Louise Huxtable](#) and [Jane Jacobs](#) had an indelible impact on the city’s planning and architecture. On a more ignominious note, the “post-war miracle” designed by **Natalie de Blois** at [270 Park Avenue](#), is the world’s largest building to ever be intentionally demolished, so as to make way for new headquarters for JPMorgan Chase.

In honor of International Women’s Day, CityRealty takes a look at residential buildings designed by architectural luminaries like **Annabelle Selldorf**, **Nancy Ruddy**, **Liz Diller**, and the late **Dame Zaha Hadid**. Not only have these innovative buildings risen in some of New York’s most highly sought-after neighborhoods, but they were instrumental in putting some areas on the map.

Features

[cityrealty.com/nyc/market-insight/features/future-nyc/on-international-women039s-day-see-nyc-residential-buildings-designed-female-architects/16342](https://www.cityrealty.com/nyc/market-insight/features/future-nyc/on-international-women039s-day-see-nyc-residential-buildings-designed-female-architects/16342)



L to R: 42 Crosby Street/Annabelle Selldorf, 520 West 28th Street/Zaha Hadid, 15 Hudson Yards/Liz Diller

From [Future New York](#) [On International Women's Day](#), see [NYC residential buildings designed by female architects](#)

By [Michelle Mazzarella](#) Monday, March 8, 2021

It has been proclaimed that “the future is female,” but women have made a mark on New York City’s history as well. The new plaza taking shape to connect the DUMBO and Brooklyn Heights sections of Brooklyn Bridge Park will be named [Emily Roebling Plaza](#) in honor of **Emily Warren Roebling**, the engineer who oversaw the completion of the Brooklyn Bridge in the wake of her husband’s illness. The writings of [Ada Louise Huxtable](#) and [Jane Jacobs](#) had an indelible impact on the city’s planning and architecture. On a more ignominious note, the “post-war miracle” designed by **Natalie de Blois** at [270 Park Avenue](#), is the world’s largest building to ever be intentionally demolished, so as to make way for new headquarters for JPMorgan Chase.

In honor of International Women’s Day, CityRealty takes a look at residential buildings designed by architectural luminaries like **Annabelle Selldorf**, **Nancy Ruddy**, **Liz Diller**, and the late **Dame Zaha Hadid**. Not only have these innovative buildings risen in some of New York’s most highly sought-after neighborhoods, but they were instrumental in putting some areas on the map.

Dame Zaha Hadid

520 West 28th Street, Chelsea

Design by Zaha Hadid Architects

6 two- to four-bedroom units from \$4M - \$15M



Phot by Hufon Crow for Related Companies



Dame Zaha Hadid was the first woman to win the prestigious Pritzker Prize of Architecture, and a look at 520 West 28th Street is enough to see what made her well deserving of the honor. Its sculptural form, curved lines, and unique windows make tourists on the High Line stop and stare. Her firm designed the interiors as well as the facade, and all units feature incredible light, soaring ceilings, and custom wall paneling. [See full details here.](#)

Liz Diller

Fifteen Hudson Yards, Midtown West

Design by **Diller Scofidio + Renfro**
14 one- to four-bedroom units from \$3M - \$29.5M



Photo by Timothy Schenck





Hudson Yards transformed an abandoned railyard into New York's newest neighborhood, and Fifteen Hudson Yards, designed by **Diller Scofidio + Renfro** in collaboration with Rockwell Group, sits at the heart of it. From a distance, its towering, 914-foot height and elegant silhouette make it a graceful addition to the New York skyline. Closer to the site, it overlooks Thomas Heatherwick's Vessel sculpture and adjoins performance venue The Shed as well as the High Line. **[See full details here.](#)**

30 East 29th Street

Design by CetraRuddy.

14 studio to three-bedroom units from \$1.4M - \$18.75M





447 West 18th Street
Design by Audrey Matlock Architect
1 five-bedroom unit for \$7.5M



Chelsea Modern via Stribling



Winka Dubbeldam

The Greenwich Street Project, Soho

497 Greenwich Street

Design by Archi-Tectonics

2 two-bedroom units from \$2.5M - \$2.95M



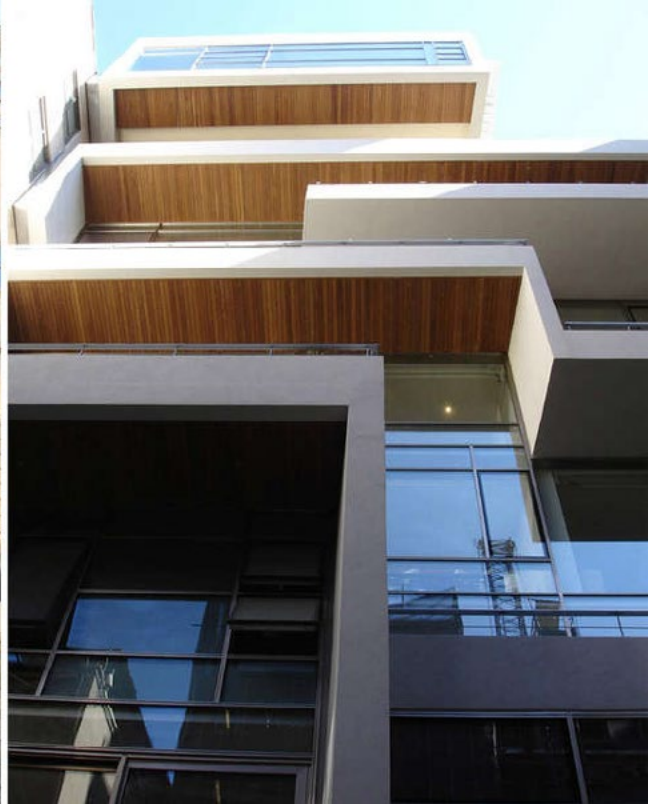
Photo via ScottParks International Realty



Before Hudson Square began its transformation from industrial to residential, The Greenwich Street Project presented an appealing vision of what the area and architecture could be. By integrating an existing brick loft building with a new steel and glass structure, and by adding cantilevered balconies overlooking the Hudson River, acclaimed architect **Winka Dubbleddam** married the old and the new in a very artful and environmentally pleasing way. Six small parapets serve as a "crease" that creates the impression of sewing the two buildings together. [See full details here.](#)

V33, Tribeca

33 Vestry Street
Design by Archi-Tectonics



V33 via CityRelty





Shortly after **Winka Dubbeldam** took New York by storm with The Greenwich Street Project (see above), her firm turned its attention to Tribeca with V33. The front facade is comprised of interlinked translucent stone sheaths, glass, and metal panels, and the rear facade is slightly angled and ever more dramatic. It is little wonder the boutique condominium sold out quickly. **[See full details here.](#)**

Lindy Roy

High Line 519, Chelsea

519 West 23rd Street
Design by Roy Studio
1 three-bedroom unit for \$4.4M



High Line 519 via Elliman





When 520 West 28th Street was still a twinkle in **Zaha Hadid's** eye (see above), award-winning architect **Lindy Roy** designed the first new residential building adjacent to the High Line. The resulting 12-story condominium fuses contemporary architecture, European elegance and raw Chelsea charm. The steel screens on the south facade skim over an all-glass surface, and the north facade of the building has balconies that act as a front-row seat to the High Line. **[See full details here.](#)**