

SPECIFICATION



KITCHENS & BATHROOMS

Loyn and Co, Threefold,
Archi-Tectonics in NY
and the joy of bling

CASE STUDY

CHELSEA TOWNHOUSE, NEW YORK CITY ARCHI-TECTONICS

The existing brownstone townhouse located in Chelsea, New York, was gut renovated and a 51m² two-storey-high garden extension with a roof terrace was added. The new extension is conceived as a light, airy space, which creates a filter to the garden space beyond, adding more light and better views. The folded glass and steel facade structure is partially clad with reclaimed palisander hardwood planks, and incorporates large pivoting doors opening up to extend the lower-level library into the garden, as an exterior living room. On the parlour floor, the living room and kitchen have direct access to the garden. On the third floor, the master bedroom suite opens up onto the terrace overlooking the garden.

Natural materials create a warm atmosphere for the interiors. A new, four-storey-high staircase was installed with a skylight above. This is accentuated by a railing of large glass sheets, which catch the light and guide it all the way down. At the entrance, a large set of sculpted wood sliding doors was inserted to connect the living room and hallway in an adaptable manner, thus creating a flexible use of space.

The living room's grey walls merge into the beautiful Valcucine etched, grey, glass kitchen, while the Siberian wood floors provide the space with roughness and warmth.

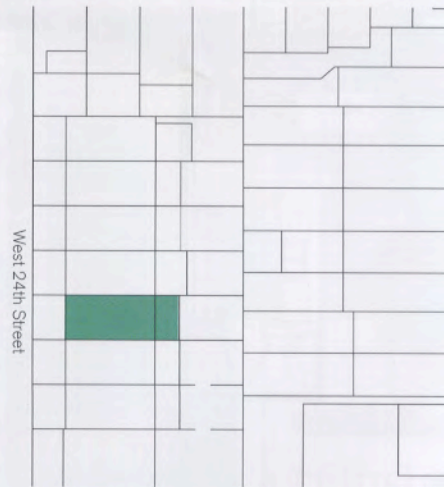
*Winka Dubbeldam, founder and principal,
Archi-Tectonics*





Project data

Completion date 2011
Gross internal floor area 316m²
Architect Archi-Tectonics
Client Confidential
Architect of record Randall Collins
Cost Confidential
Project type Townhouse with 51m² extension and garden
Mechanical engineer Stan Slutsky
Structural engineer Anastos Engineering Associates



Location plan



Left View from garden, with staircase leading up to dining area, with study on floor below
Right Dining area and Valcucine kitchen

Photography by Richard Powers

Specified products

Glass facade

Solar Star

Wood facade

Recycled palisander

Kitchen

Valcucine

www.valcucine.com

Bespoke stone fireplace

Stone Source

www.stonesource.com

Custom-milled timber door

Designed by Archi-Tectonics, fabricated by

Aria Group

www.aria-group.com

Timber flooring

Siberian Floors

www.siberianfloors.com

Chairs

Vermelha Chair (living room) by Campana Brothers

Butterfly Chair (master bedroom) by Johnny

Swing

campanas.com.br

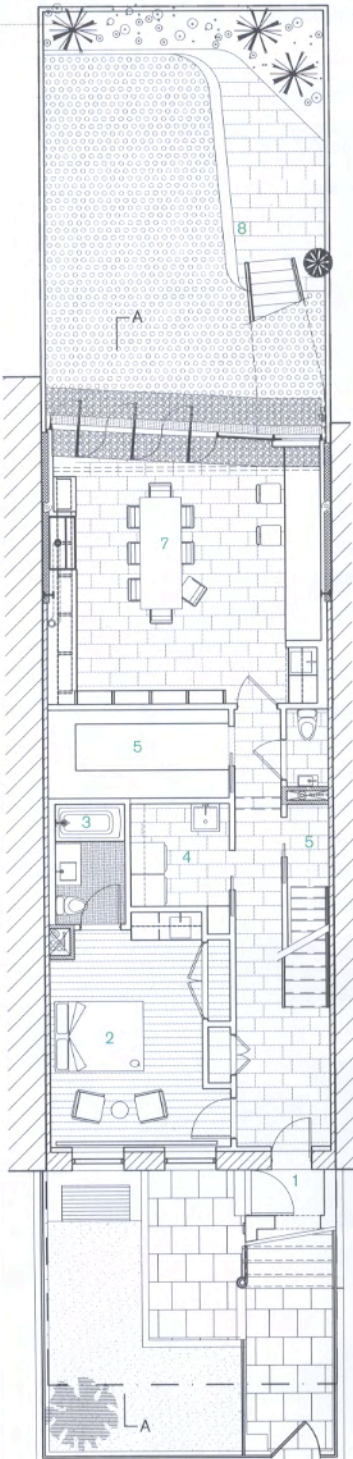
www.johnnyswing.com

Back garden

Plant Specialists

plantspecialists.com

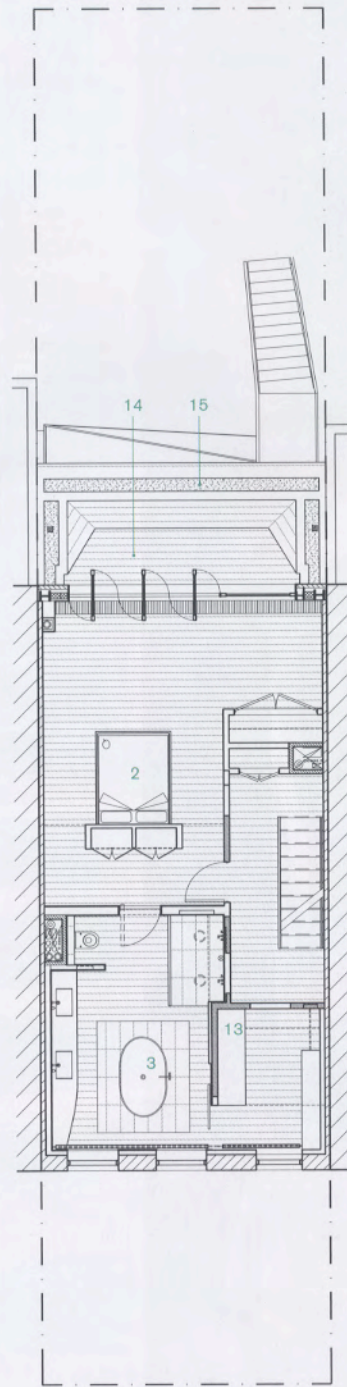




Garden level plan



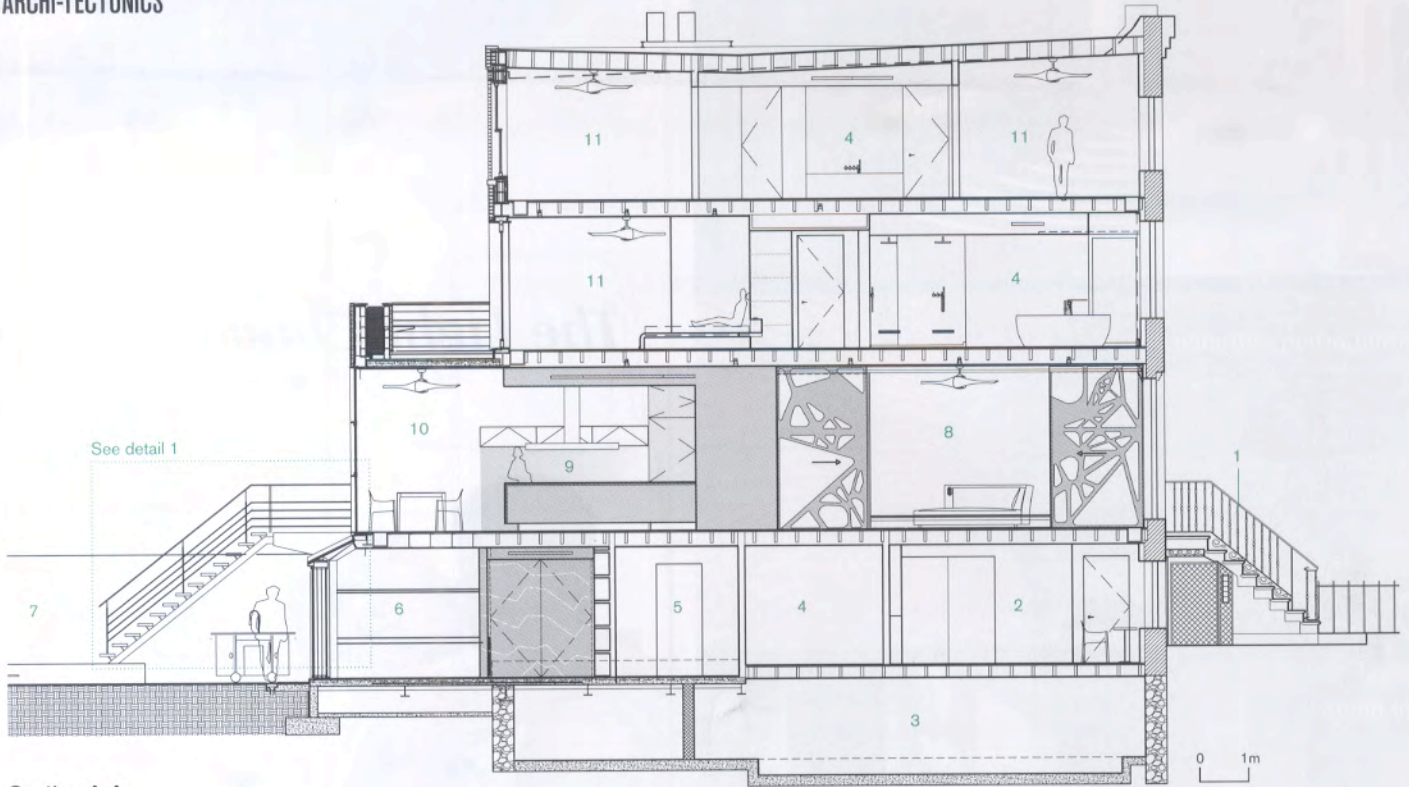
First floor plan



Second floor plan



1. Entrance
2. Bedroom
3. Bathroom
4. Laundry room
5. Storage
6. WC
7. Studio
8. Garden
9. Garden above street level
10. Living area
11. Kitchen
12. Dining area
13. Dressing room
14. Terrace
15. Planter



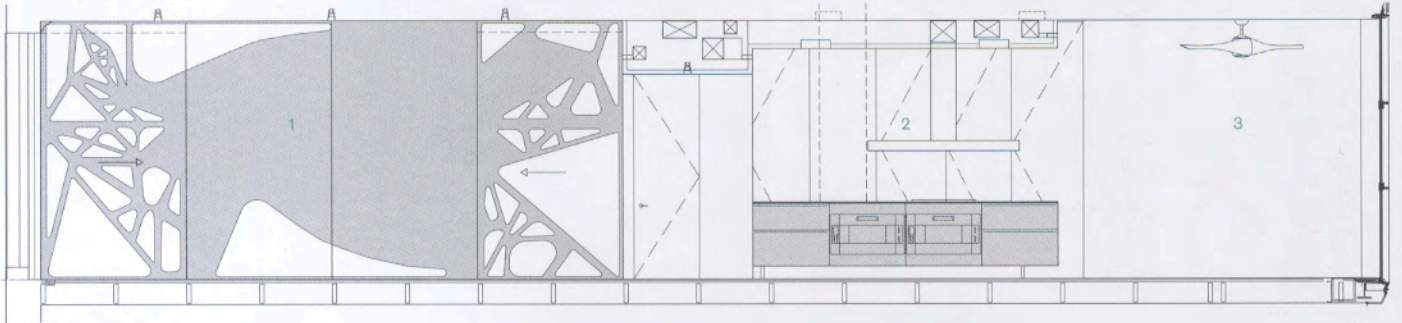
Section A-A



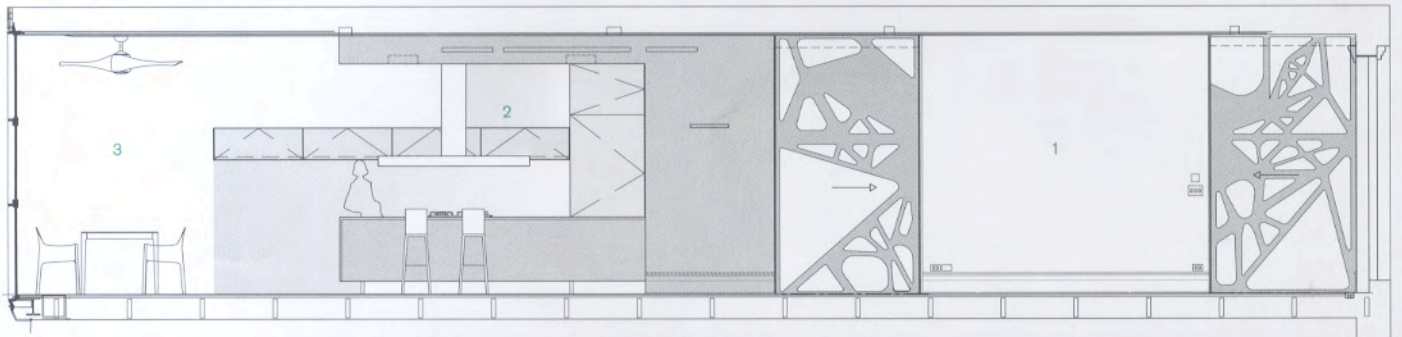
The new extension is a light, airy space, which creates a filter to the garden space beyond

- 1. Entrance stair
- 2. Guest room
- 3. Cellar
- 4. Bathroom
- 5. Storage
- 6. Studio
- 7. Garden
- 8. Living area
- 9. Kitchen
- 10. Dining area
- 11. Bedroom

Left View across garden with Valcucine kitchen in foreground



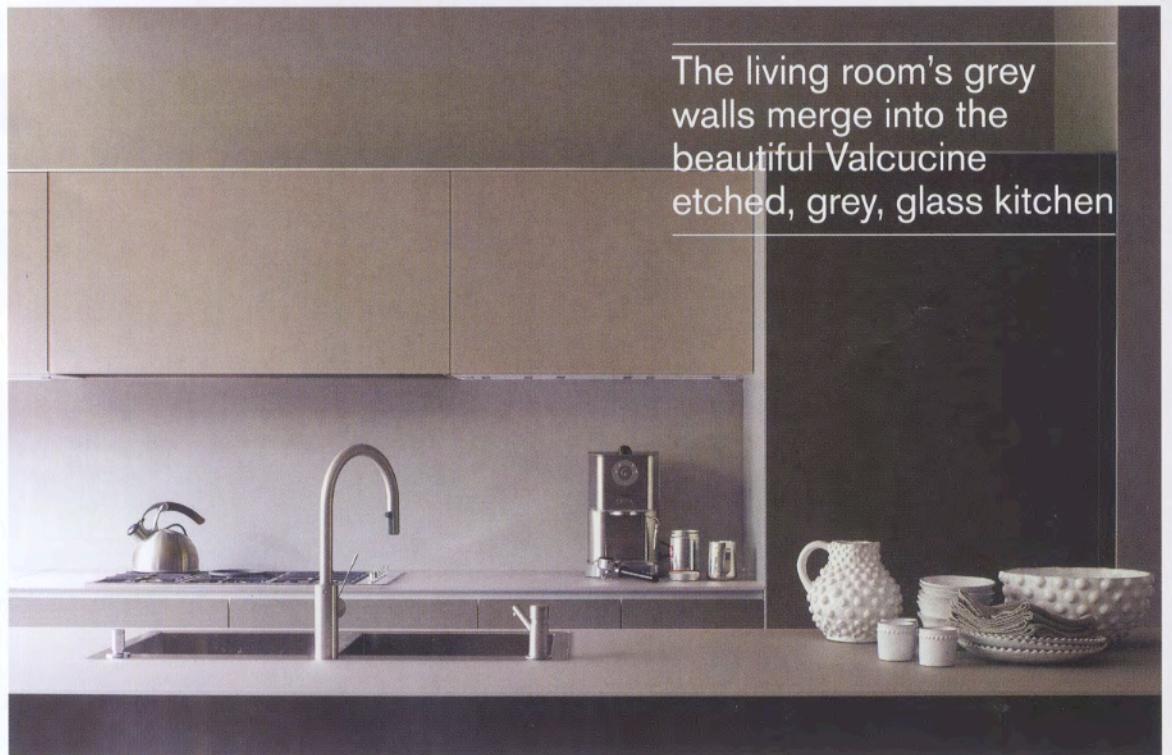
Interior elevation at first floor level



Interior elevation at first floor level

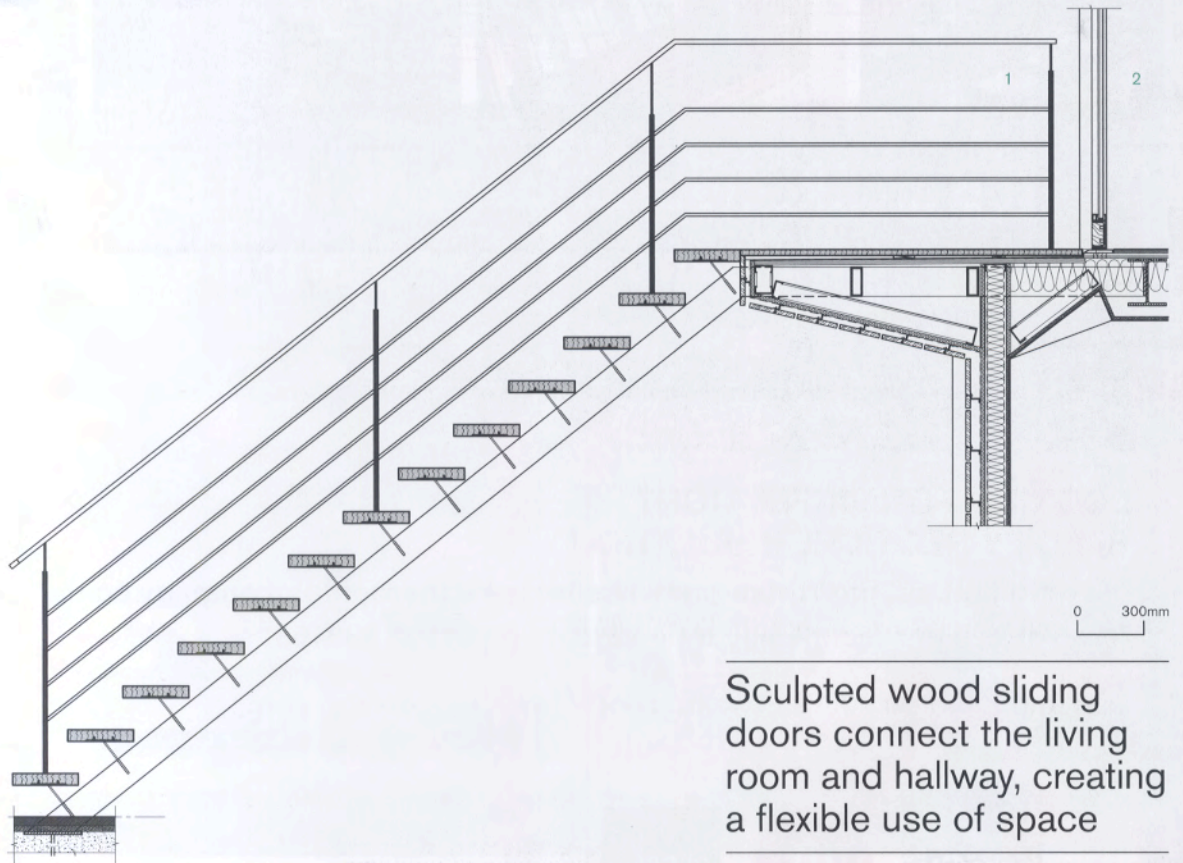
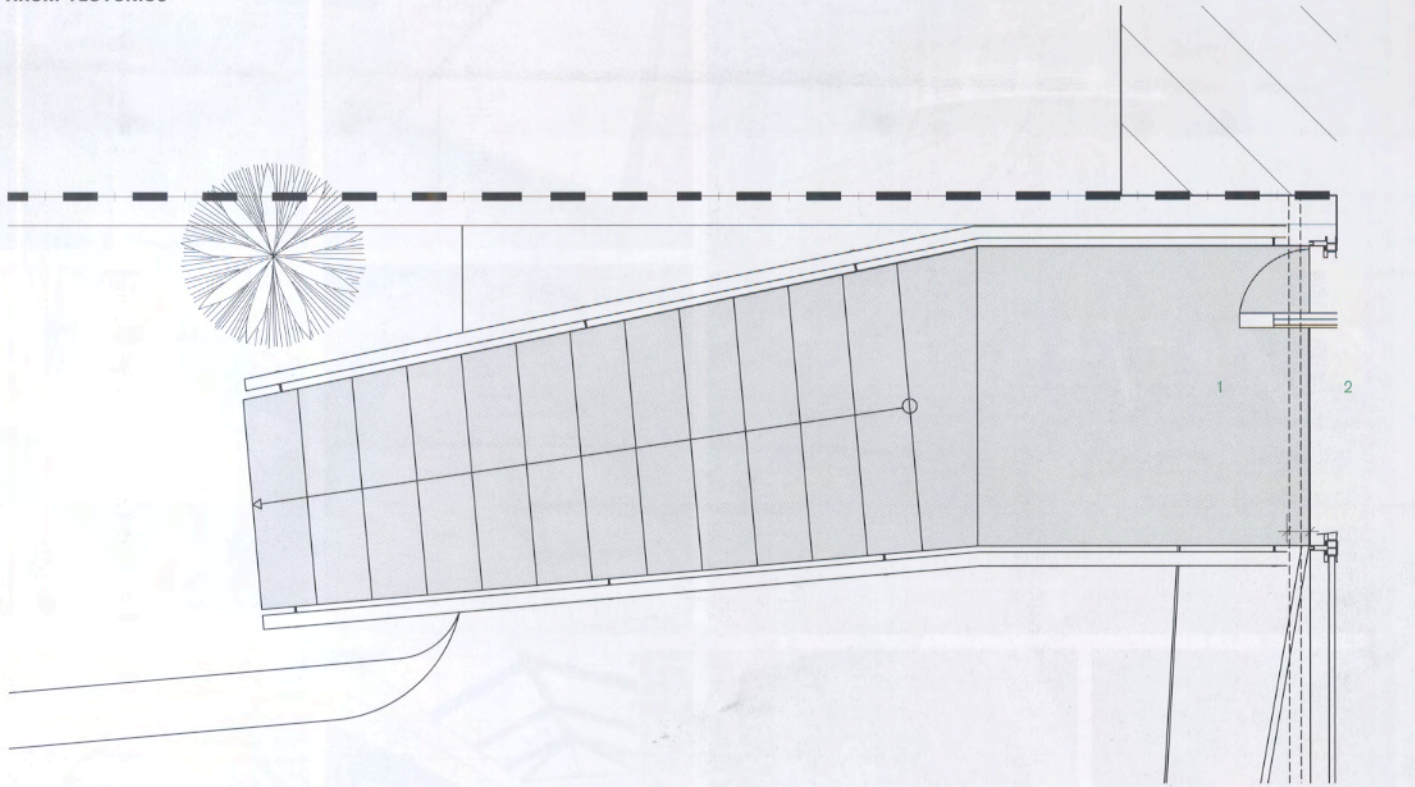
- 1. Living area
- 2. Kitchen
- 3. Dining area

0 500mm



The living room's grey walls merge into the beautiful Valcucine etched, grey, glass kitchen

Right View across the Valcucine kitchen



Detail 1: Garden stair
1. Exterior
2. Living room/
dining room

Sculpted wood sliding doors connect the living room and hallway, creating a flexible use of space