

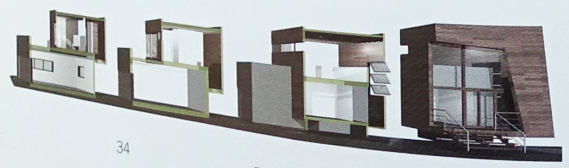
← The guesthouse bedroom opens directly to the outdoors.



This guest cottage in Croton Reservoir, Upstate New York, was built about a year before the main house was erected, an unusual reversal from the more common practice of adding a guesthouse to an existing domestic property. The clients were eager to live on their site and it was quicker to build the more compact structure first. However, the architects, the Manhattan-based firm ArchitectsTectonics, designed the two separate edifices, known together as the Gypsy Trail Residence, at the same time. The 1,500-square-foot guesthouse is intended to be the "alter-ego" of the 3,000-square-foot big house. It is similar in materials but a smaller, simpler version of its more sophisticated "other."

Although set on a sprawling rural site, the interior of this cottage is an updated version of the suburban split-level house. A stone garage (composed of rocks found on site) supports the cantilevered wooden residence, which hovers marginally above the ground. One enters the elevated, slightly tilted structure through a set-back glass door that is protected by a fold of the building's wooden skin. A double-height living room leads to a slightly higher dining/kitchen area, which then leads onto a large, impromptu terrace on the garage roof. All public living zones are oriented toward the scenic lakefront, while the sleeping area has direct access to a private outdoor porch.

On the exterior, the building's striated wooden skin, has been cut at funky, unexpected angles creating an odd harmony with the surrounding craggy hillside. The stone base of the big house also supports a cantilevered wood, steel, and glass second floor. This volume has been slightly tweaked and twisted to procure a direct view of the lake and capture maximum sunlight.



← Sections

Particular attention was paid to corner details.→



The subtly distorted geometry of the north façade.→