

A Dozen Buildings Opening in 2022

John Hill

29. December 2022



Renderings of a half-dozen buildings that are set to open in 2022

As 2021 segues into 2022, World-Architects looks ahead to a dozen notable buildings opening in the new year, including OMA's long-awaited Taipei Performing Arts Center, Herzog & de Meuron's flagship building for the Royal College of Art, and SANAA's Sydney Modern Project.

Winter



The new home for the Columbia Business School, which consists of two buildings [designed by Diller Scofidio + Renfro](#) for the university's expanding Manhattanville campus, opens in January. (Photo: John Hill/World-Architects)

The new flagship building at the Royal College of Art's new Battersea campus in London, designed by Herzog & de Meuron following a 2016 competition, was slated to open on January 11, though that opening date has been delayed due to Covid restrictions.



The House of Hungarian Music in Budapest's City Park, designed by Sou Fujimoto, will open toward the end of January. (Photo © Liget Budapest Project)

Spring



The Valley, a 75,000m² mixed-use project designed by MRVDV for RJB Group, will open in Amsterdam's Zuidas in the spring. (Photo © Marcel Steinbach)



National Museum of Art, Architecture and Design in Oslo, designed by Kleihues + Schwerk, will open to the public on June 11. (Visualization: Kleihues + Schwerk)

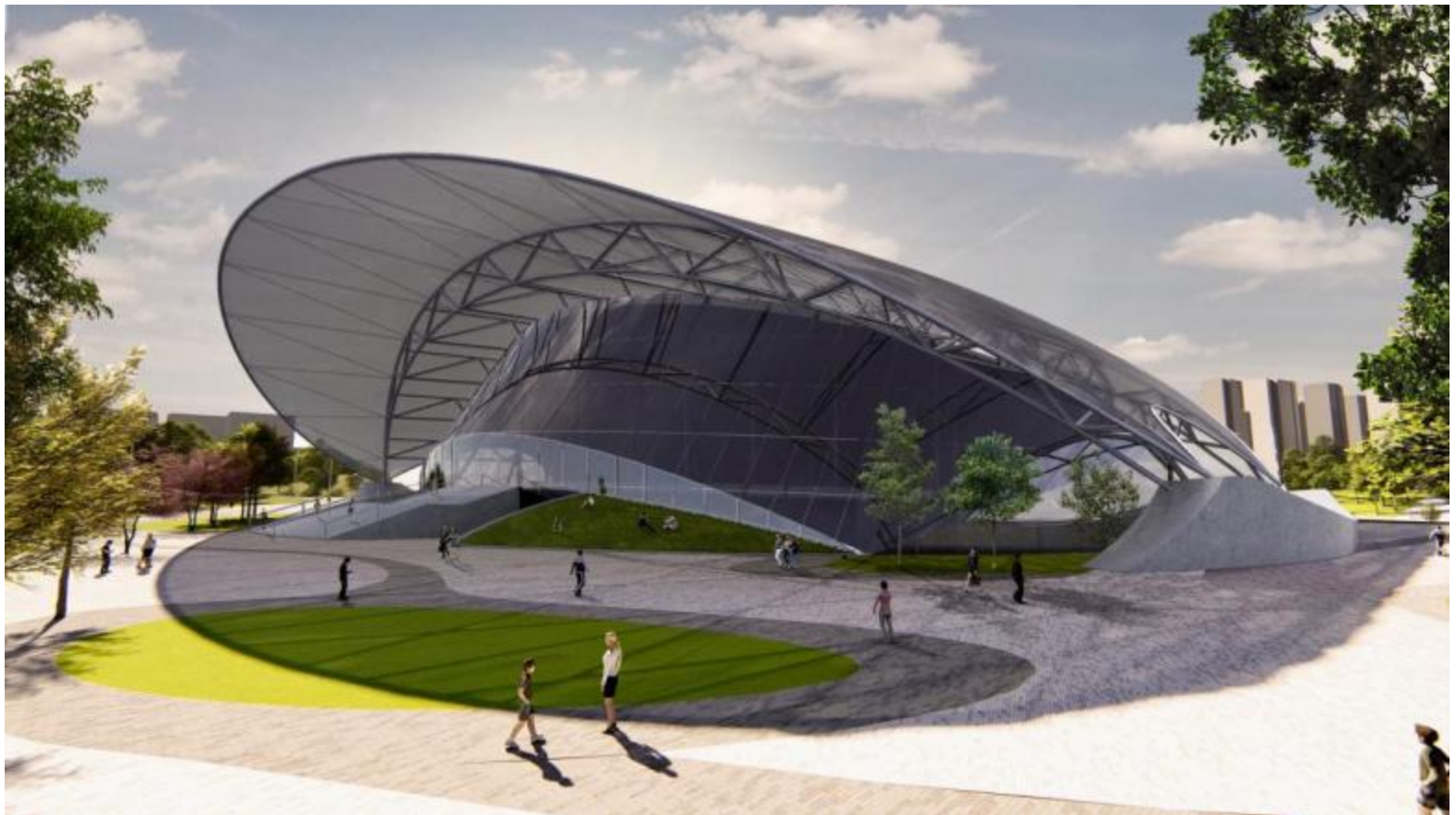


A new gallery designed by Thomas Phifer and Partners to house a sculpture by Richard Serra will open at Glenstone Museum in Potomac, Maryland, in "spring/summer" 2022. (Visualization: The Boundary, courtesy of Glenstone Museum)

Summer



The much anticipated Taipei Performing Arts Center, designed by OMA - Office for Metropolitan Architecture, will (finally) open to the public in the summer. (Photo: Chris Stowers © OMA)



The 2022 Asian Games, featuring a master plan and hybrid buildings [designed by Archi-Tectonics](#), will open in Hangzhou, China, on September 10. (Visualization: Archi-Tectonics)

Fall



The renovation and expansion of the Arkansas Museum of Fine Arts in Little Rock, Arkansas, designed by [Studio Gang](#), opens to the public in the fall. (Visualization: Studio Gang)



The Sydney Modern Project, designed by SANAA (Kazuyo Sejima + Ryue Nishizawa) following a 2015 competition, will open to the public "at the end of 2022." (Visualization: SANAA © Art Gallery of New South Wales, 2021)

Timing Unknown

A Bird's Eye View of the New National Library of Isr...



The new National Library of Israel Campus, designed by Herzog & de Meuron for a site adjacent to the Knesset in Jerusalem, captured in video in summer 2021 nearing completion, will have its grand opening at some point in 2022. (Video: Albatross)



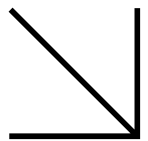
The King Abdullah Financial District (KAFD) Metro Station is one of [three buildings in the Middle East designed by the late Zaha Hadid](#) that will open in 2022. (Visualization: Zaha Hadid Architects)

Related articles

A Dozen Buildings Opening in 2022

2 weeks ago

Jobs



Projektarchitekt*in Anstellungsgrad 80...

Gunz & Künzle

Projektleiter*in Anstellungsgrad 80...

Gunz & Künzle

Praktikant*in

Schmid Schärer Architekten GmbH ETH SIA

[More Jobs](#) ↘

Other articles in this category

A Pearl on the Grass

5 days ago

A Dozen Buildings Opening in 2022

2 weeks ago

Vibration of Sound

1 month ago

BIG's Copenhill Is World Building of the Year

1 month ago

Never Demolish

1 month ago

Searching for OMA NY

1 month ago

[About](#) | [Contact](#) | [Legal](#) | [Imprint](#) | [Advertise](#) | [National Platforms](#) | [Network](#)

Newsletters

Subscribe

Follow World-Architects

